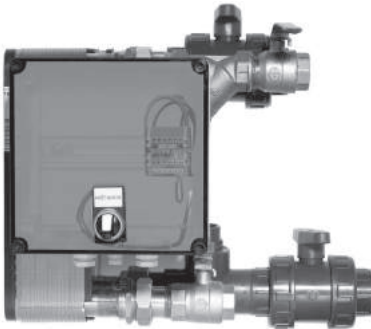


FR	NL	DE	EN	IT
ES	PT			

Swimming pool exchanger

UTW-ESPXA



Installation instructions

**intended for the
professional technician**

these must be kept
safe for subsequent consultation

1 Package

1 package: Swimming pool exchanger UTW-ESPXA, compatible with:

Code - Swimming pool kit	Heat pump model
• UTW-KSPXA or UTW-KSPXD + UTW-KREXD (regulation extension)	- Waterstage

2 Specifications

" For an exchangeable capacity of 17 kW

- Hydraulic connections: 1" (26x34 mm)
- Maximum operating pressure: 3 bar

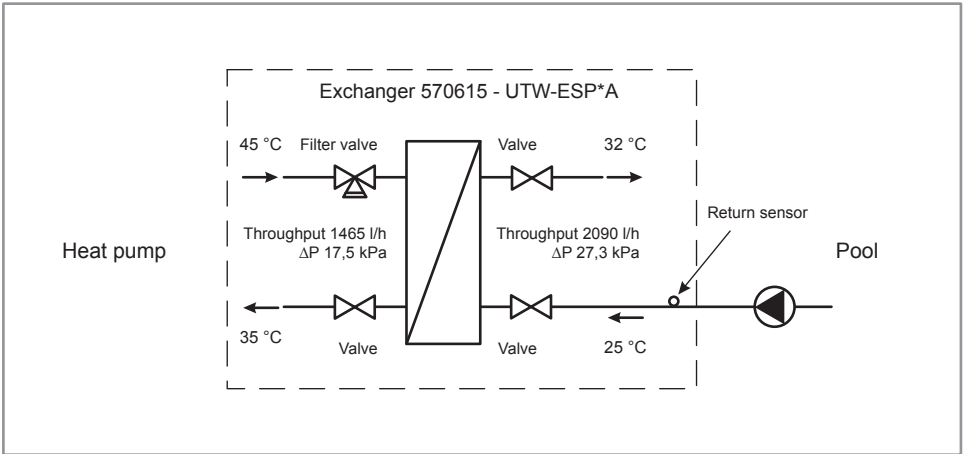


figure 1 - Schematic hydraulic diagram and characteristics

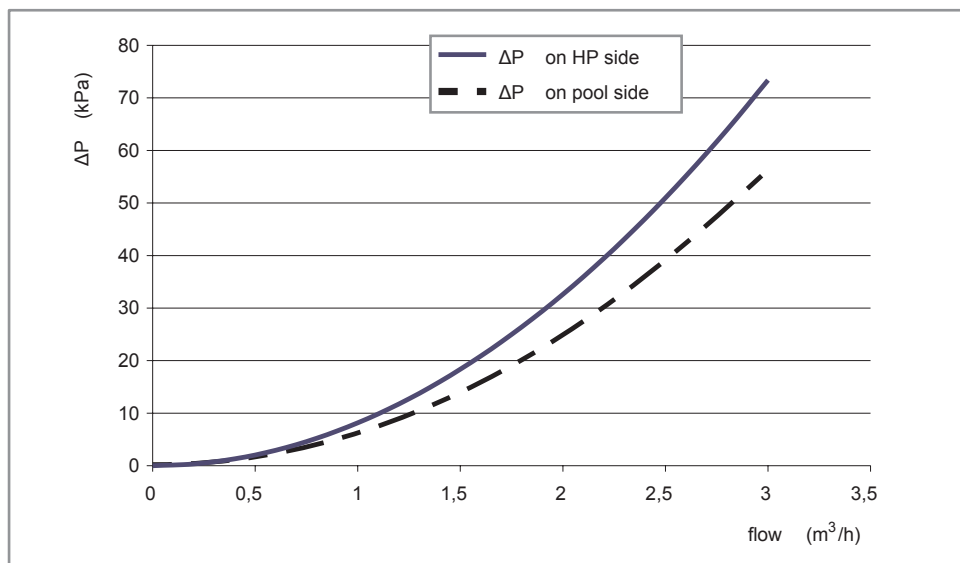
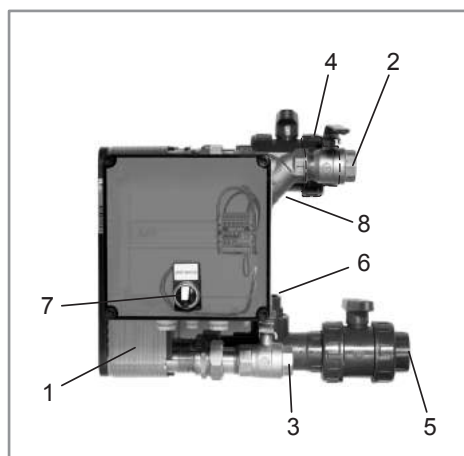


figure 2 - Pressure drop in the hydraulic circuit

3 Description



1. Exchanger
2. Inlet from the HP (brass valve)
3. Return toward HP (brass valve)
4. Outlet to pool (PVC pipe)
5. Return from pool (PVC pipe)
6. Housing for the return probe
7. Start/stop switch
8. Filter

figure 3 - Appliance devices

4 Mounting bracket

Fix the support solidly to a flat, hard-wearing wall (not a light partition) ensuring that it is correctly levelled.

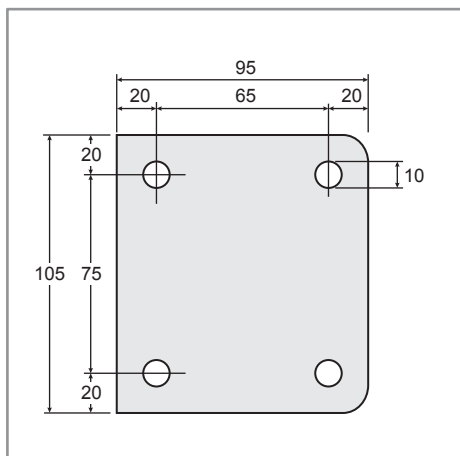


figure 4 - Dimensions in mm

5 Hydraulic connections and return sensor

The connection must comply with good trade practice according to local building regulations. (see figure 1).

Place the return sensor into the "Housing for the return probe".
(part no. 6 on page 3, figure 3).

6 Electric wiring

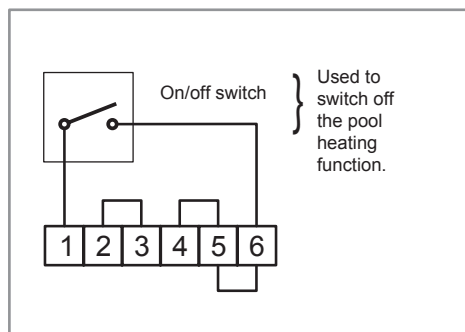


figure 5 - Electric wiring

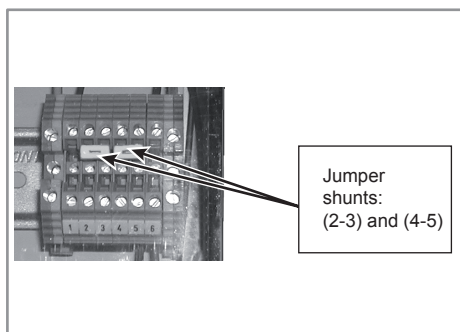


figure 6 - Jumper shunts

7 Electrical connections

Ensure that the general electrical power supply has been cut off before starting any repair work. The electrical installation must be conducted in accordance with the prevailing regulations. The electrical connections must only be made when all the other fitting operations have been completed (fixing, assembly, etc.).

Remark: You can install 3-Phase or single phase circulation pump.

7.1 - Waterstage WS*AxxDA, WS*K160DA9, WS*G140DB6

Please refer also to the instructions supplied with pool kit (UTW-KSPA).

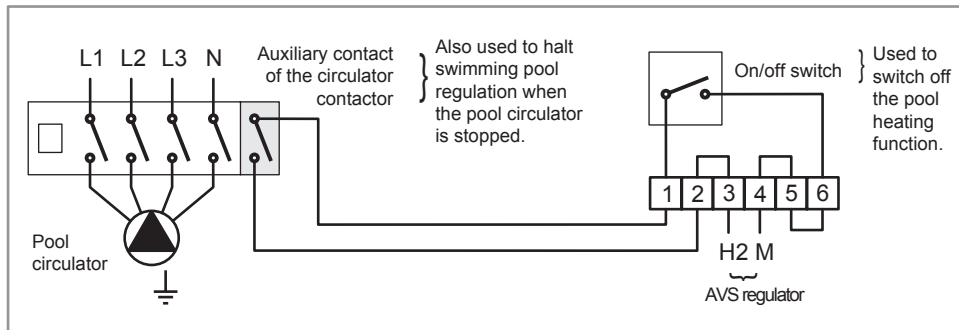


figure 7 - Electrical connections

7.2 - Waterstage WS*G140DC6, WS*K160DC9

Please refer also to the instructions supplied with pool kit (UTW-KSP*D) and regulation extension (UTW-KRE*D).

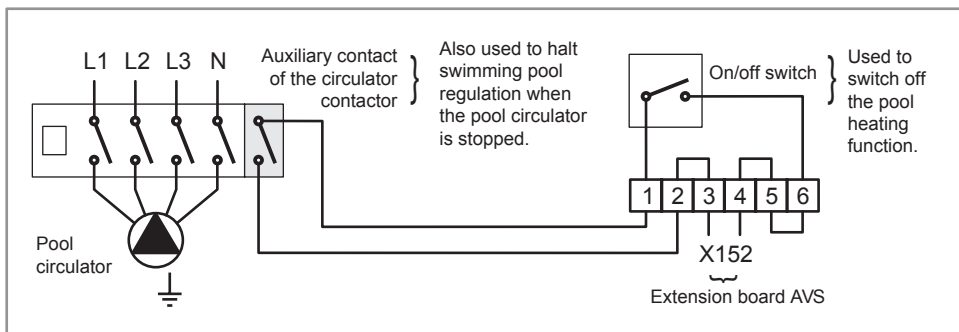


figure 9 - Electrical connections