

**SPLIT TYPE
AIR CONDITIONER**

CASSETTE type (50Hz)

SERVICE MANUAL



Models

Indoor unit	Outdoor unit
AUY12AGA	AOY12AZAL
AUY12RGA	AOY12RZAL
AUY14AGA	AOY14AZAL
AUY14RGA	AOY14RZAL

S P E C I F I C A T I O N S

TYPE		COOL	COOL & HEAT	COOL	COOL & HEAT
INDOOR UNIT		AUY12AGA	AUY12RGA	AUY14AGA	AUY14RGA
OUTDOOR UNIT		AOY12AZAL	AOY12RZAL	AOY14AZAL	AOY14RZAL
COOLING CAPACITY	(kW)	3.65 - 3.70	3.55 - 3.60	4.00 - 4.10	3.90 - 4.00
HEATING CAPACITY	(kW)	—	4.00 - 4.10	—	4.35 - 4.50

ELECTRICAL SPECIFICATIONS

POWER SUPPLY (V)		220 - 240			
FREQUENCY (Hz)		50			
RUNNING CURRENT (A)	COOLING	6.3 - 6.3	6.3 - 6.3	7.4 - 7.4	7.4 - 7.4
	HEATING	—	6.1 - 6.1	—	7.3 - 7.3
INPUT (kW)	COOLING	1.32 - 1.36	1.32 - 1.36	1.55 - 1.60	1.55 - 1.60
	HEATING	—	1.28 - 1.32	—	1.50 - 1.55
EER (kW/kW)	COOLING	2.77 - 2.72	2.69 - 2.65	2.58 - 2.56	2.52 - 2.50
	HEATING	—	3.13 - 3.11	—	2.90 - 2.90
MOISTURE REMOVAL (ℓ/hr)		1.6	1.6	1.8	1.8
AIR CIRCULATION-HI (m³/hr)		550	550	550	550

COMPRESSOR

TYPE		Hermetic type			
CODE		AWG5515EXC		AWG5519EXC	
		220 - 240V 50Hz		220 - 240V 50Hz	
REFRIGERANT	R-22 (g)	950	1,000	1,000	1,000

FAN MOTOR

POWER SUPPLY (V)		240			
INDOOR UNIT	TYPE	MFA-14DTH		MFA-14DTH	
	HI-SPEED (r.p.m.)	740		740	
	MED-SPEED (r.p.m.)	660		660	
	LO-SPEED (r.p.m.)	580		580	
OUTDOOR UNIT	TYPE	MFB-14DT		MFB-14DT	
	HI/LO (r.p.m.)	580/280		580/280	

DIMENSIONS

INDOOR UNIT	(HEIGHT) 235mm × (WIDTH) 580mm × (DEPTH) 580mm + 70mm
OUTDOOR UNIT	(HEIGHT) 643mm × (WIDTH) 840mm × (DEPTH) 336mm
GRILLE	(HEIGHT) 35mm × (WIDTH) 650mm × (DEPTH) 650mm

WEIGHT

INDOOR UNIT	GROSS / NET (kg)	18 / 23	18 / 23
OUTDOOR UNIT	GROSS / NET (kg)	64 / 72	64 / 72
GRILLE	GROSS / NET (kg)	2.2 / 4.3	2.2 / 4.3

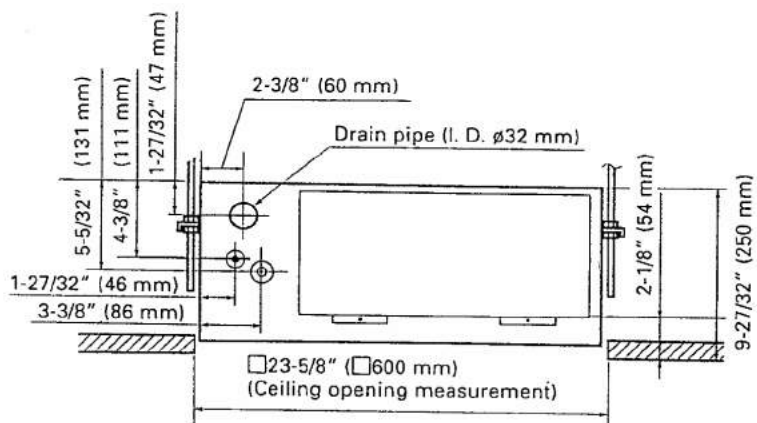
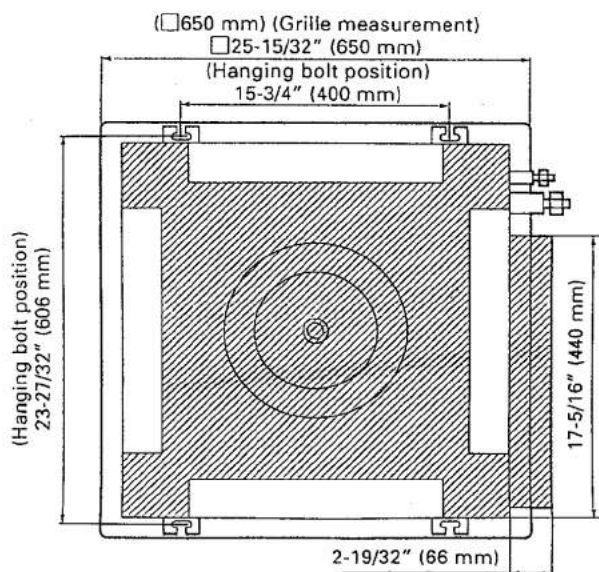
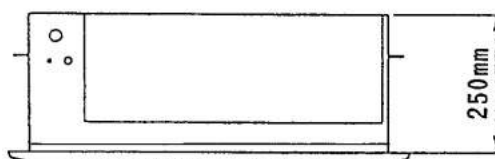
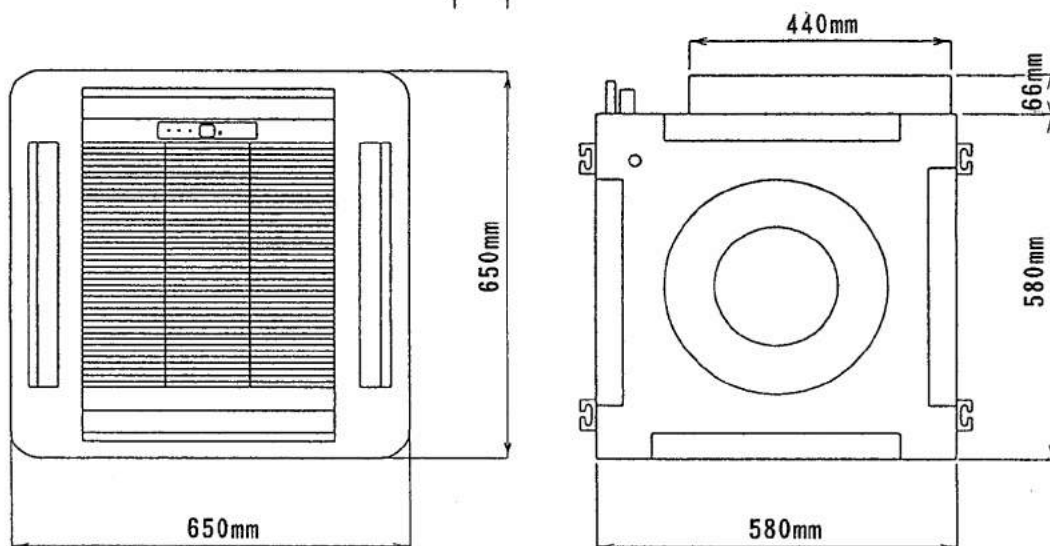
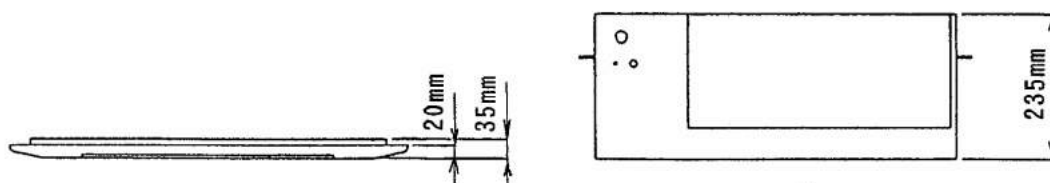
ADDITIONAL REFRIGERANT

PIPE LENGTH		16 ft(5 m)	33 ft(10 m)	49 ft(15 m)	66 ft(20 m)
FULL CHARGE AMOUNT	AUY12AGA	950 g(33.5 oz.)	1,000 g(35.3 oz.)	1,050 g(37.0 oz.)	1,110 g(38.8 oz.)
	AUY12RGA	1,000 g(35.3 oz.)	1,075 g(37.9 oz.)	1,150 g(40.6 oz.)	1,225 g(43.2 oz.)
	AUY14AGA	1,000 g(35.3 oz.)	1,050 g(37.0 oz.)	1,100 g(38.8 oz.)	1,150 g(40.6 oz.)
	AUY14RGA	1,000 g(35.3 oz.)	1,075 g(37.9 oz.)	1,150 g(40.6 oz.)	1,225 g(43.2 oz.)

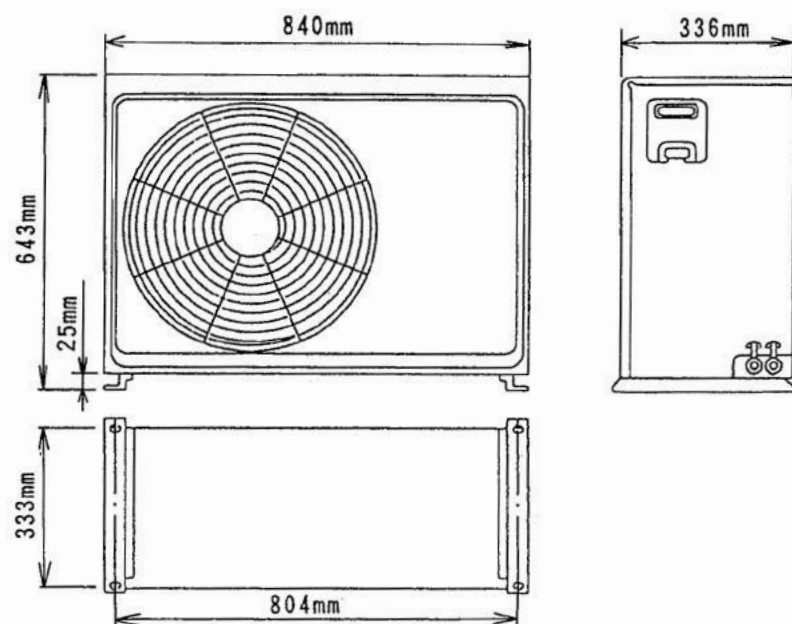
Note : In the case that 5 m are exceeded, when using a connection pipe other than that in the table, charge additional refrigerant with 0.53 oz.(15 g)/3.3 ft (1 m) for AUY12RGA and AUY14RGA Models and 0.35 oz.(10 g)/3.3 ft(1 m) for AUY12AGA and AUY14AGA Models as the criteria.

OUTLINE AND DIMENSIONS

INDOOR UNIT

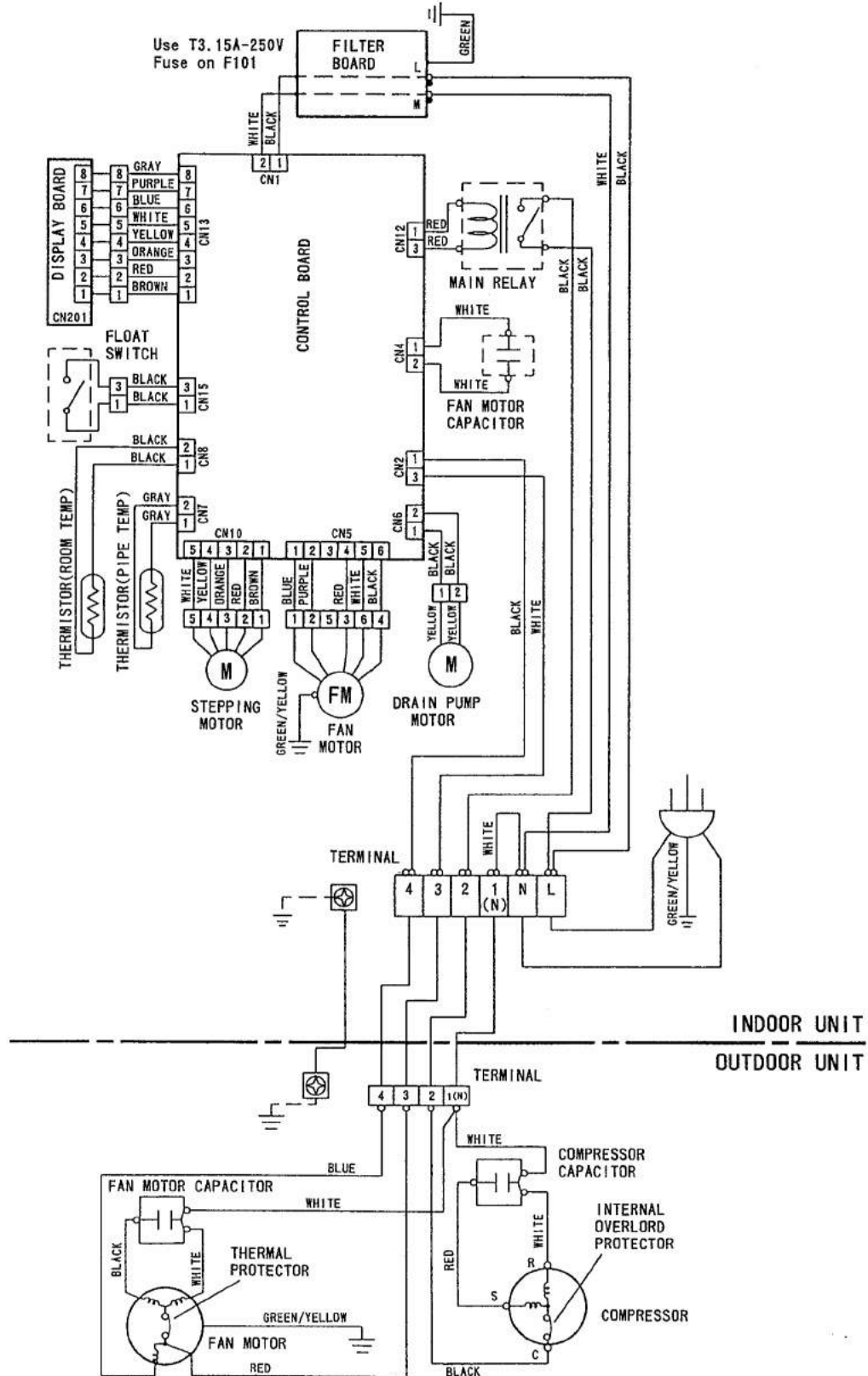


OUTDOOR UNIT

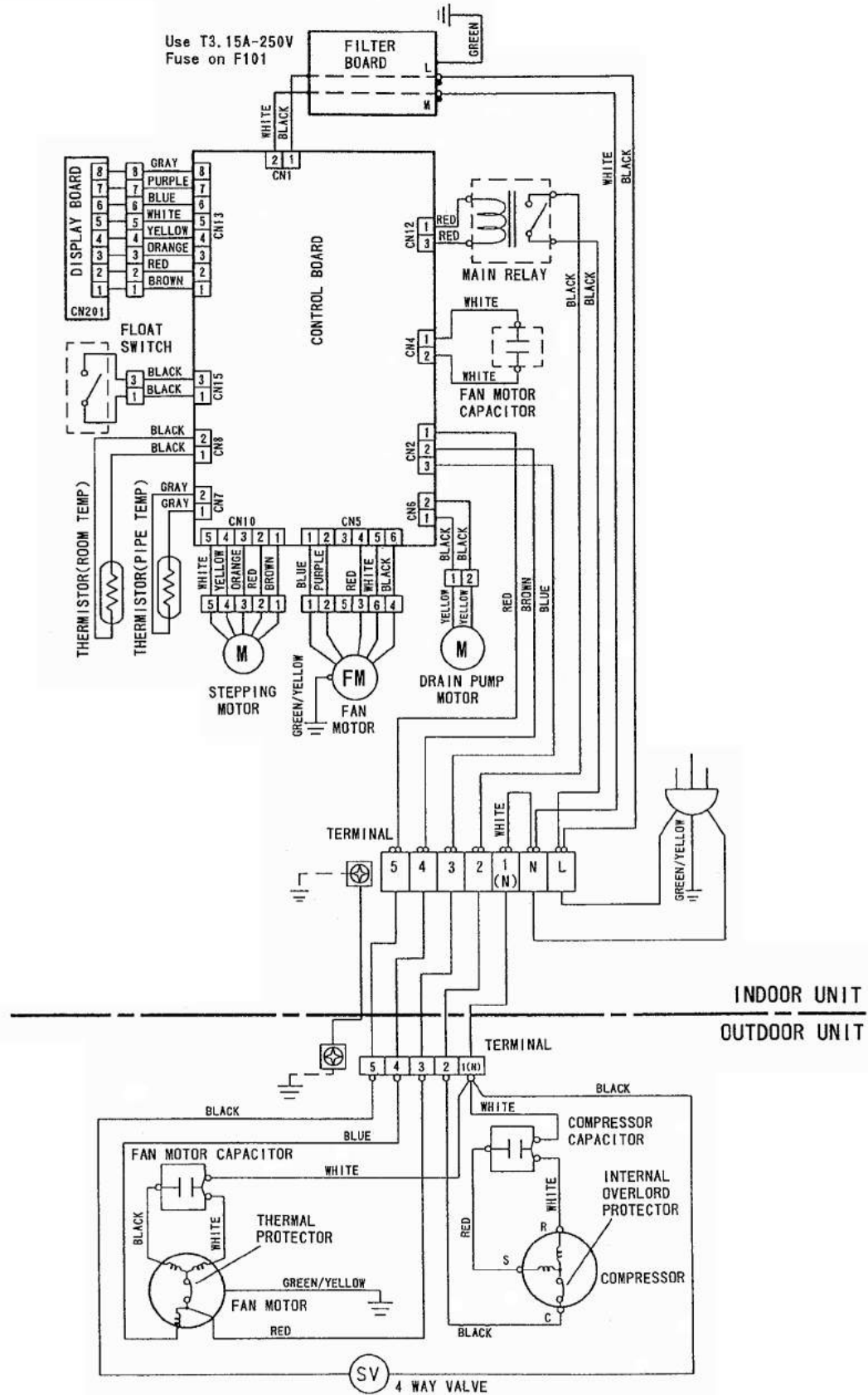


CIRCUIT DIAGRAM

Models : AUY12AGA/AOY12AZAL
AUY14AGA/AOY14AZAL

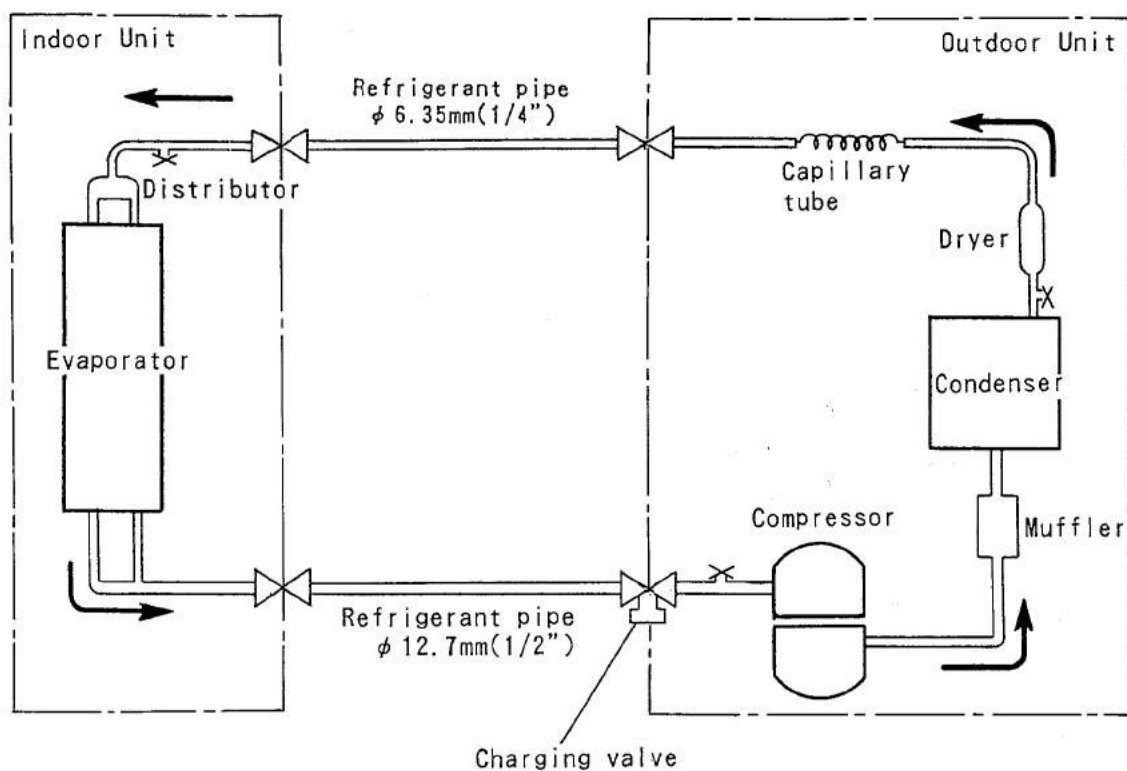


Models : AUY12RGA/AOY12RZAL
AOY14RGA/AOY14RZAL

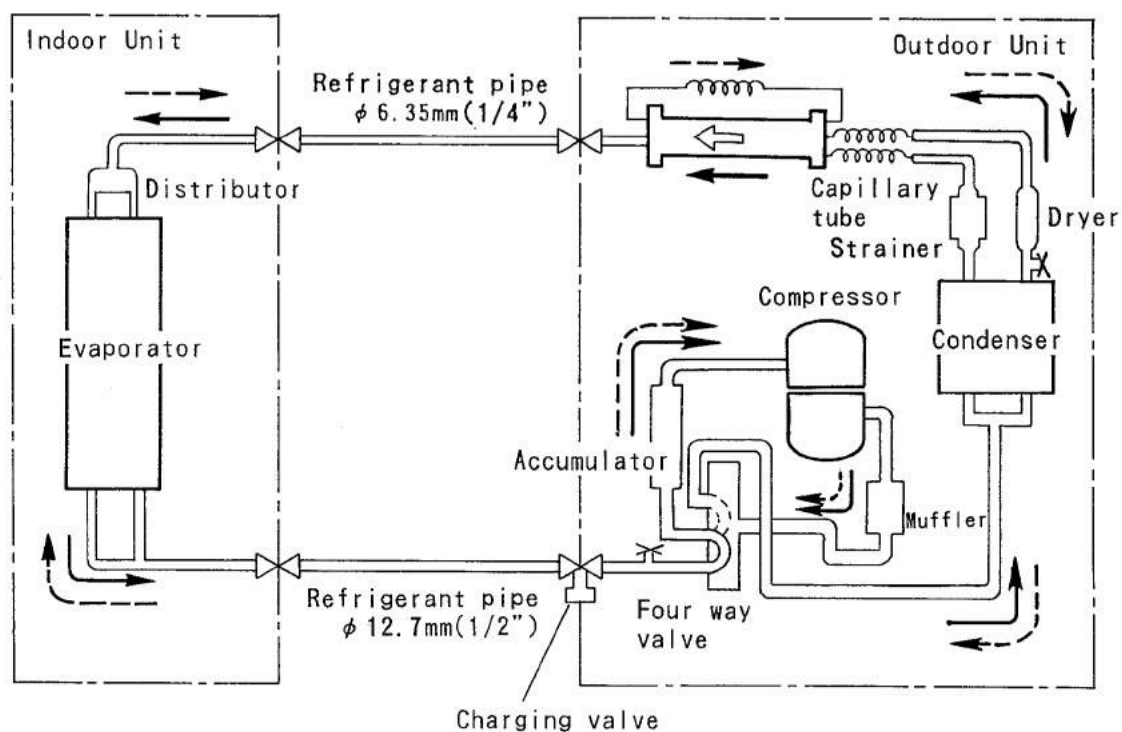


REFRIGERANT SYSTEM DIAGRAM

Models : AUY12AGA/AOY12AZAL
AUY14AGA/AOY14AZAL



Models : AUY12RGA/AOY12RZAL
AUY14RGA/AOY14RZAL

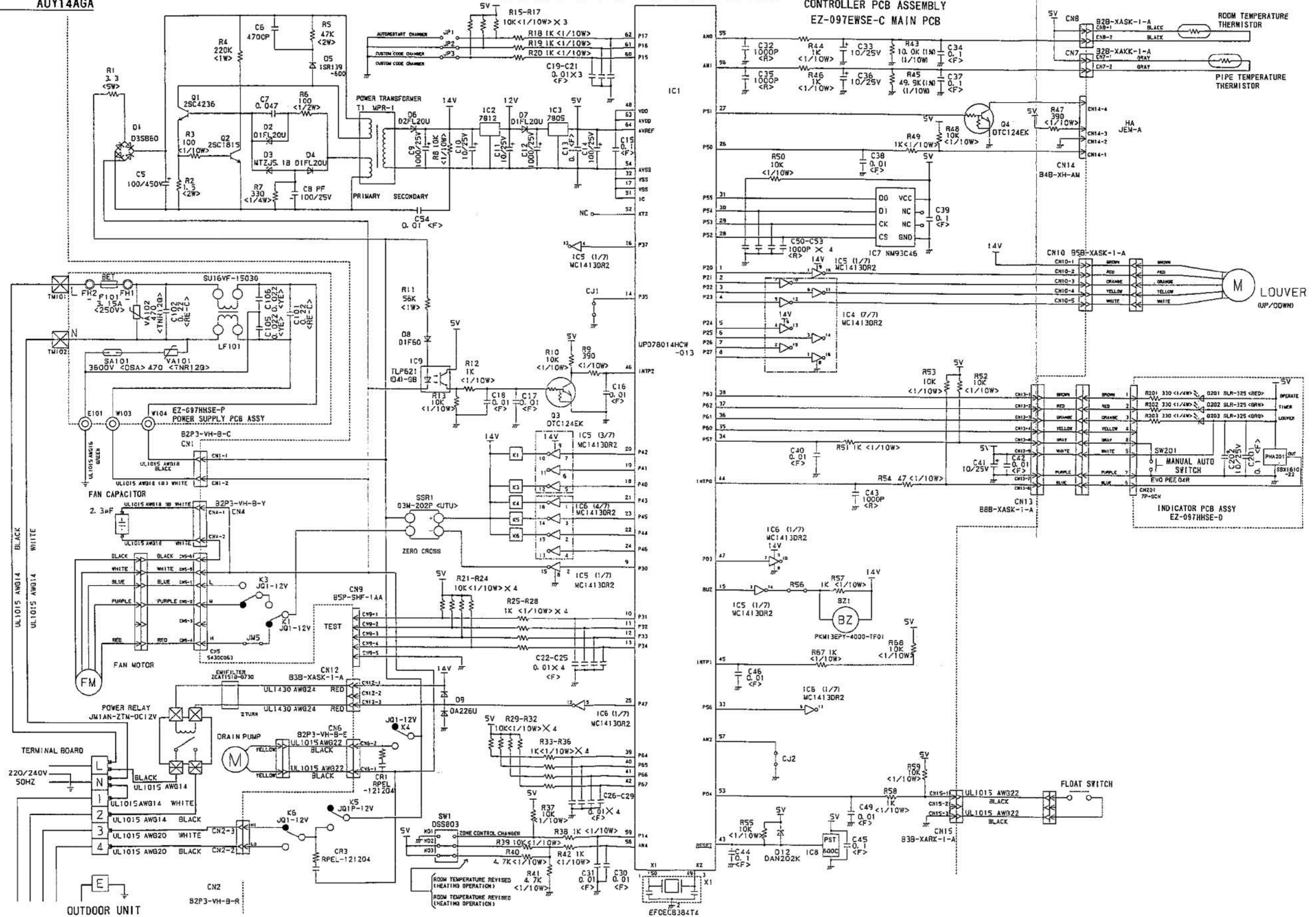


→ Cooling
- - - - - Heating
⊗ : Flare coupling

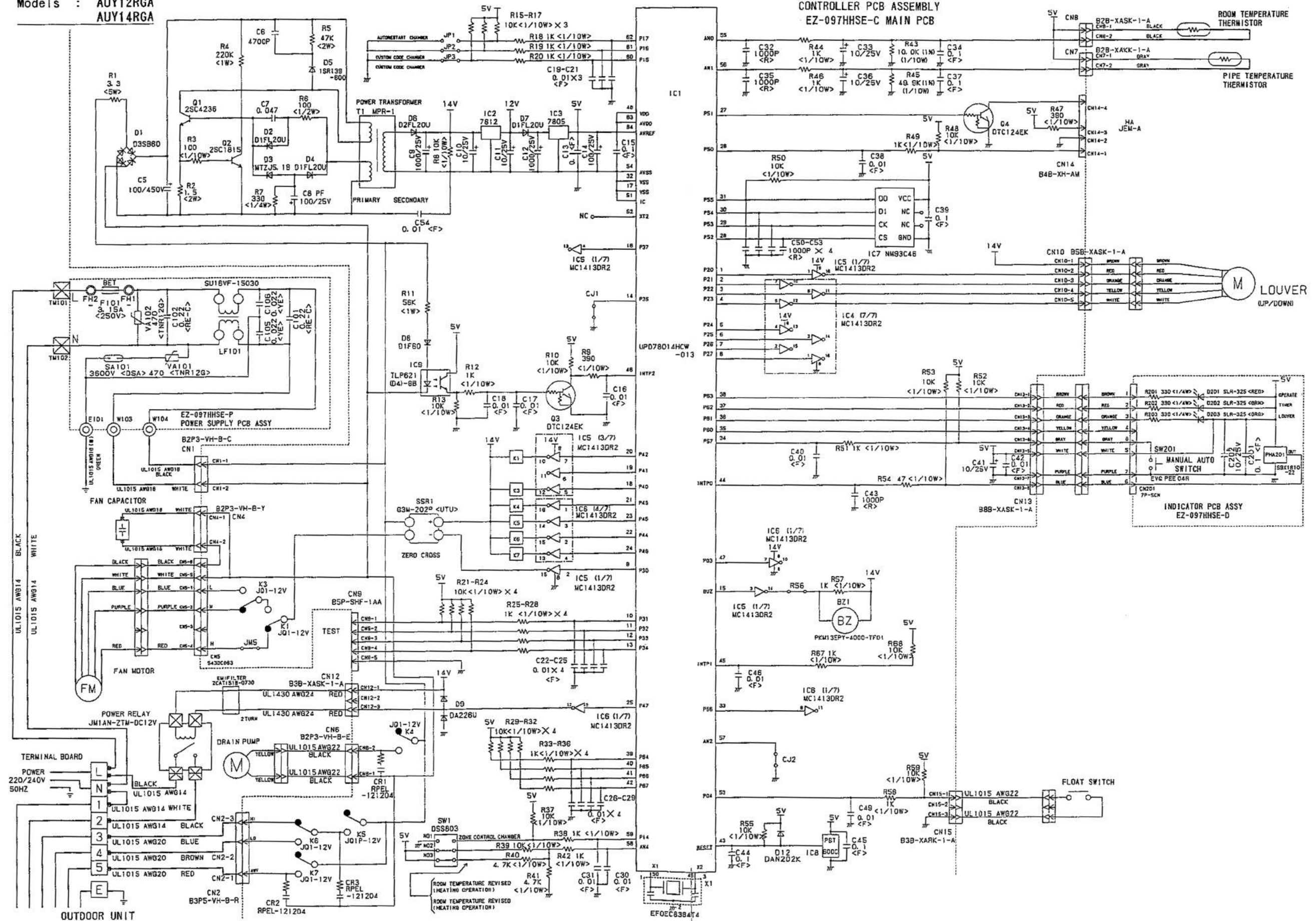
Models : AUY12AGA
AUY14AGA

INDOOR PRINTED CIRCUIT BOARD CIRCUIT DIAGRAM

CONTROLLER PCB ASSEMBLY
EZ-097EWSE-C MAIN PCB

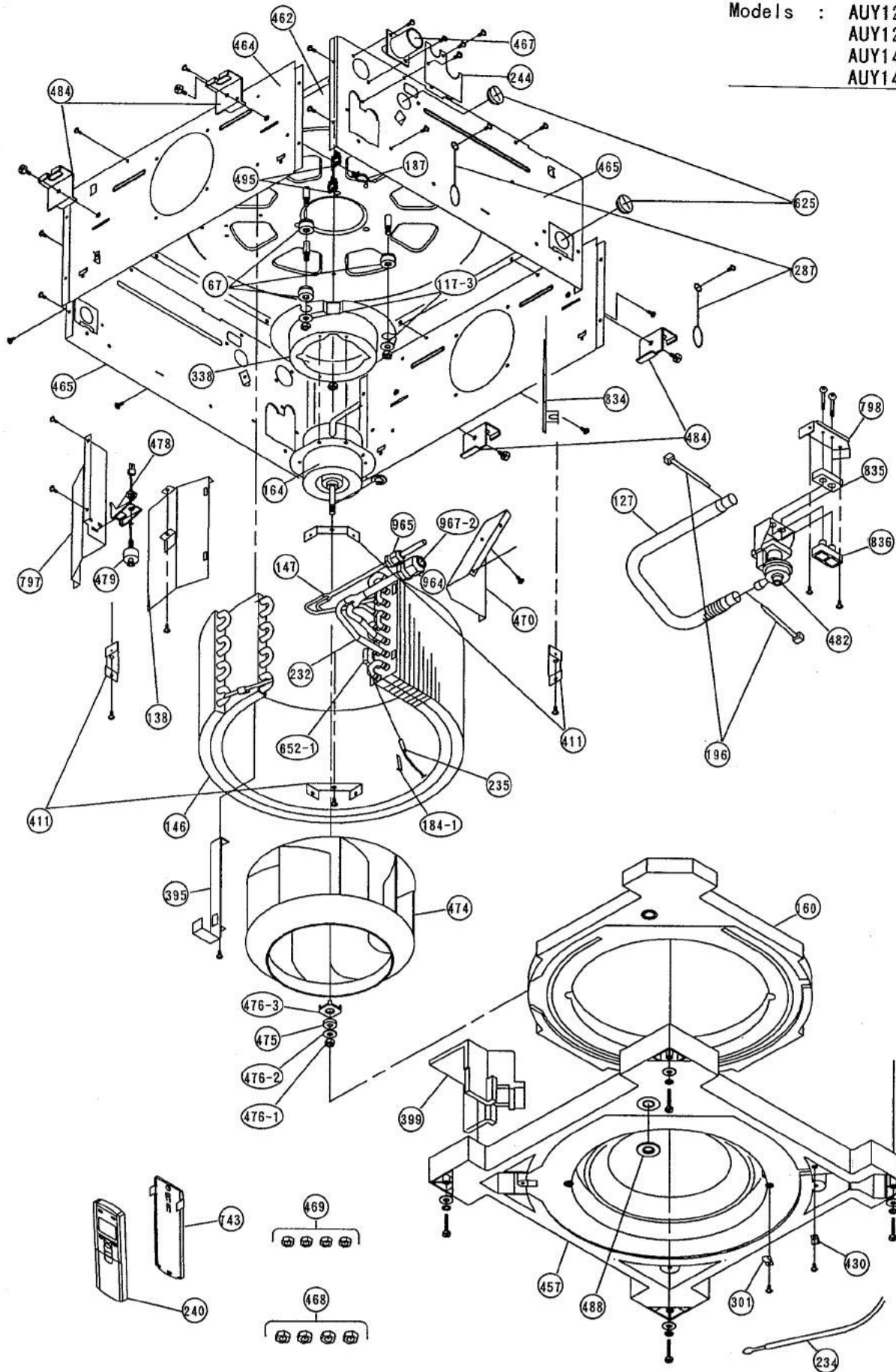


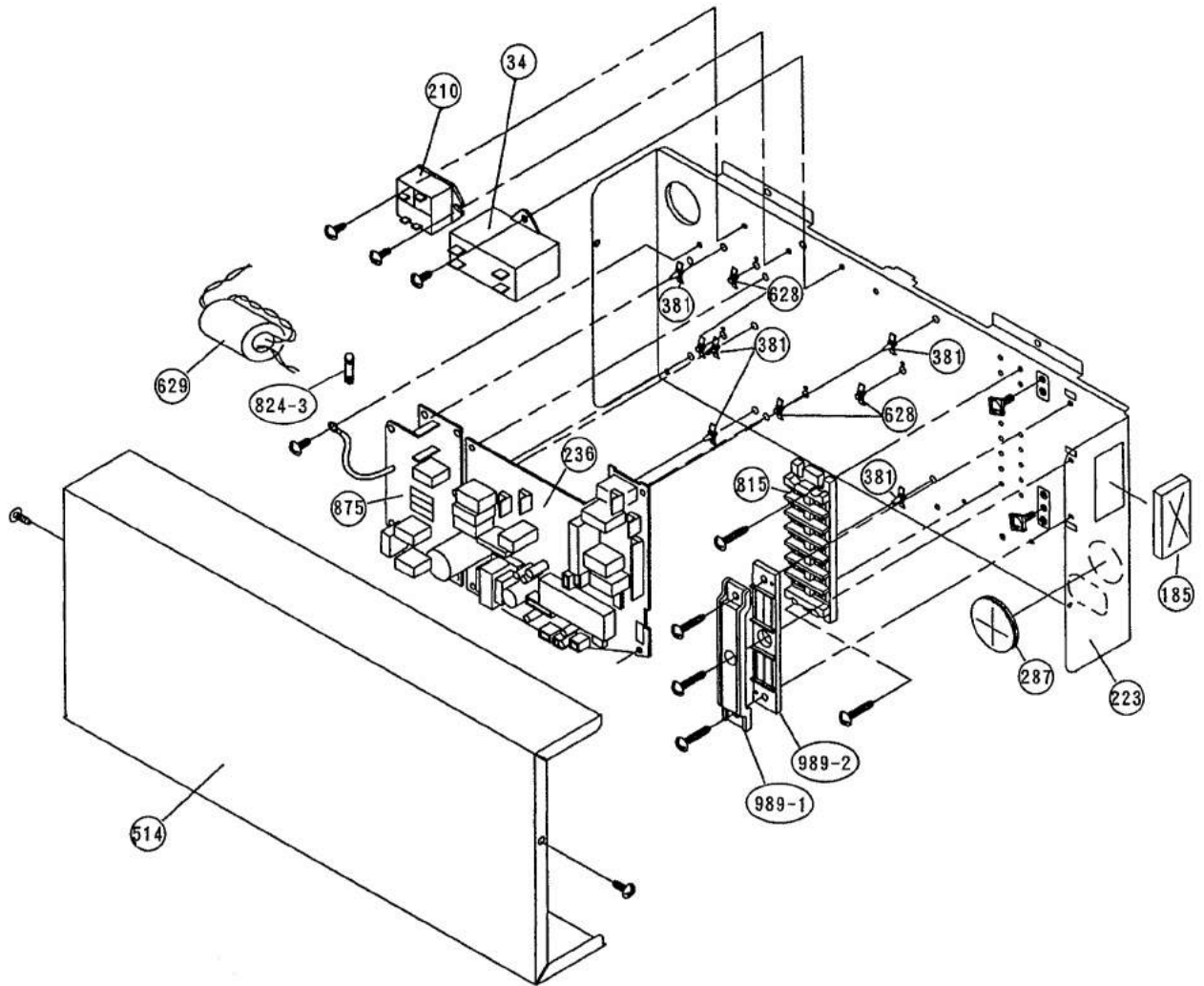
Models : AUY12RGA
AUY14RGA



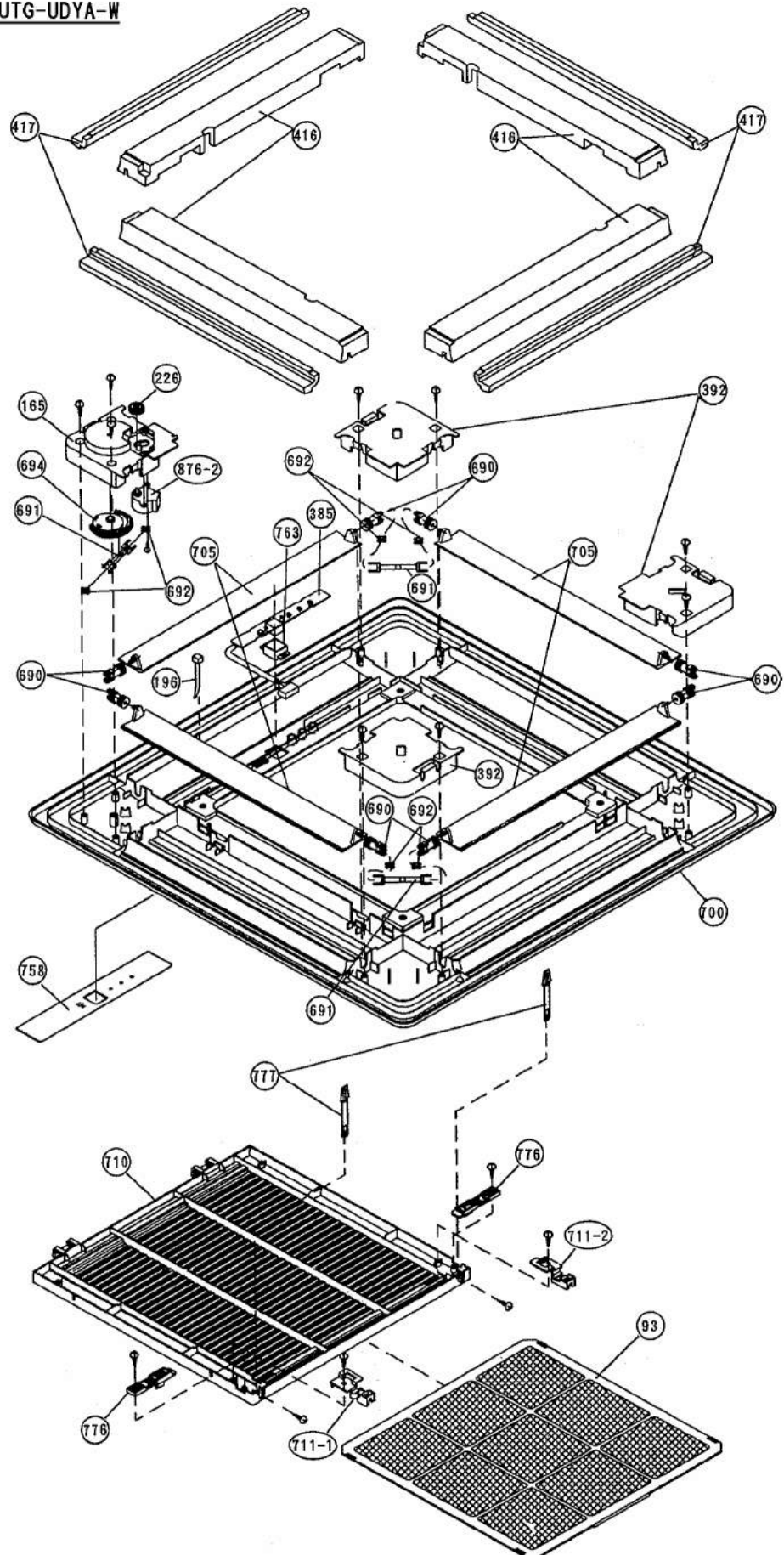
DISASSEMBLY ILLUSTRATION

Models : AUY12AGA
AUY12RGA
AUY14AGA
AUY14RGA

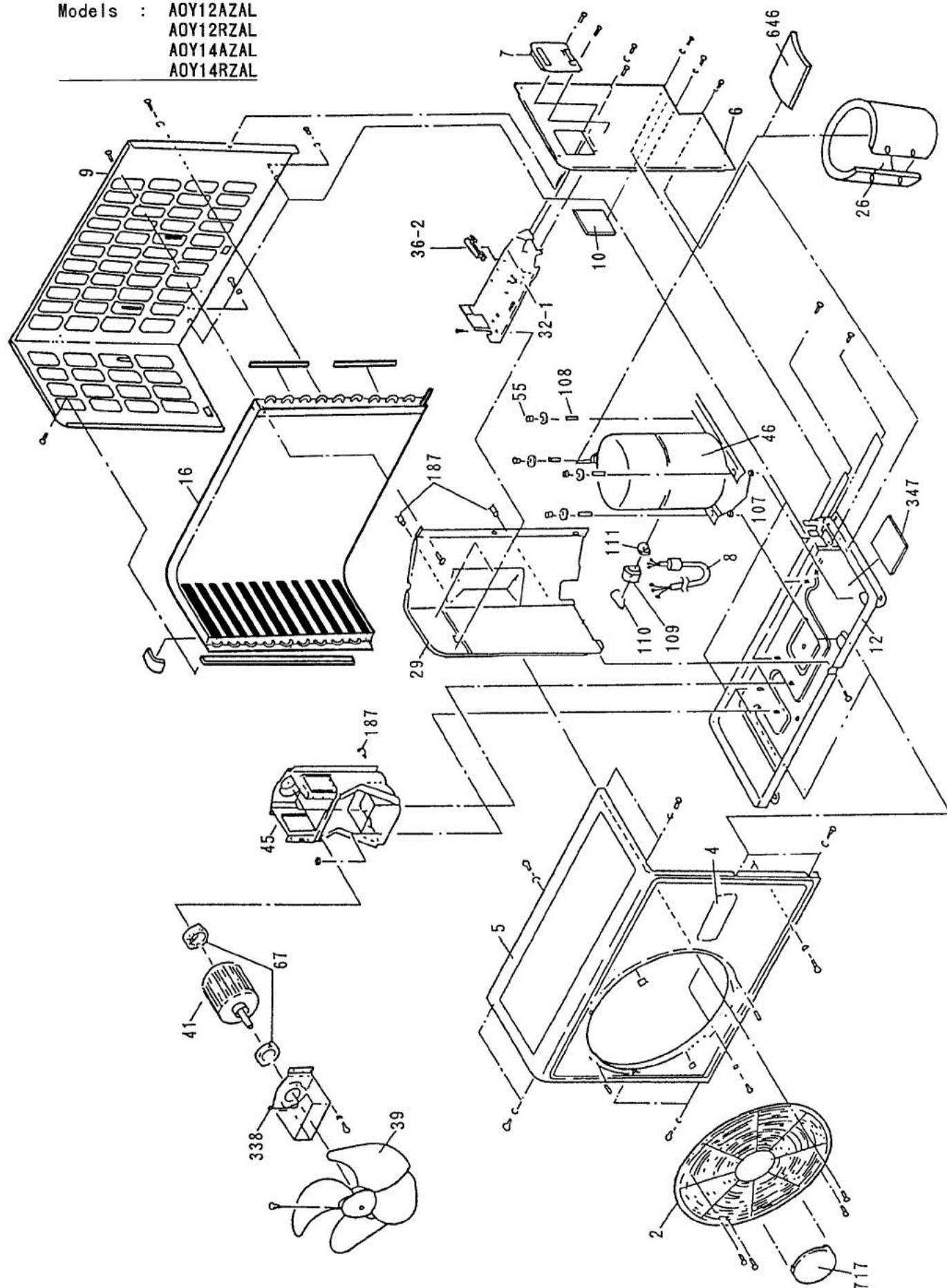




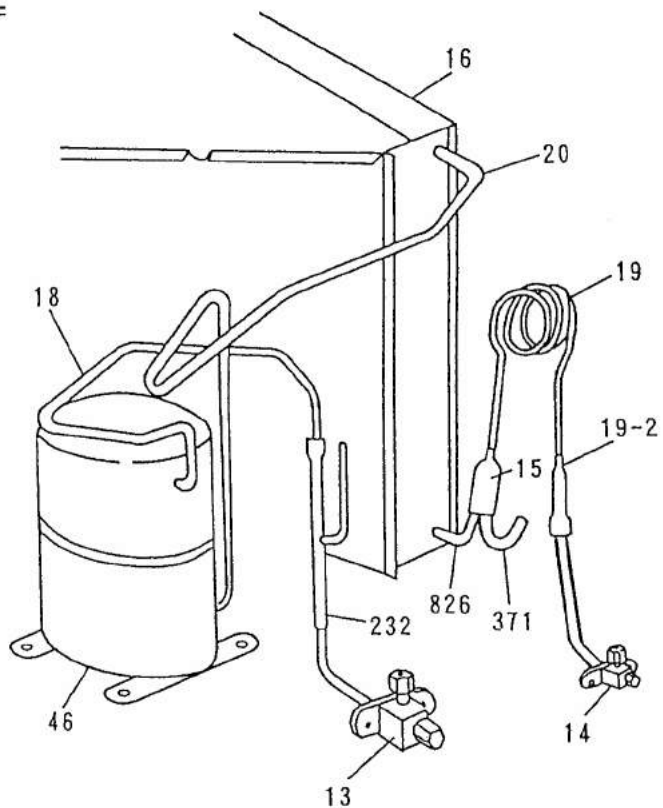
Model : UTG-UDYA-W



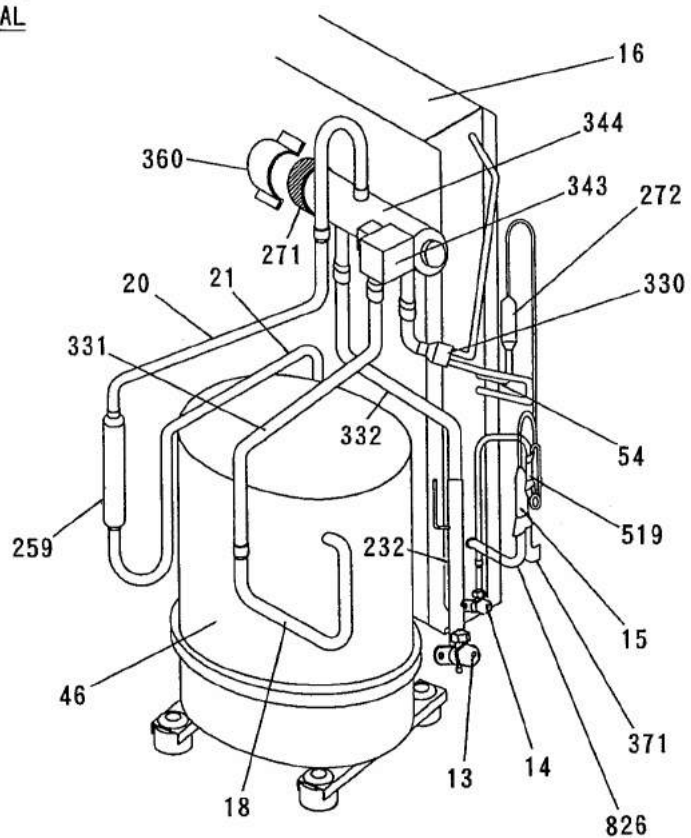
Models : AOY12AZAL
AOY12RZAL
AOY14AZAL
AOY14RZAL



Models : AOY12AZAL
AOY14AZAL

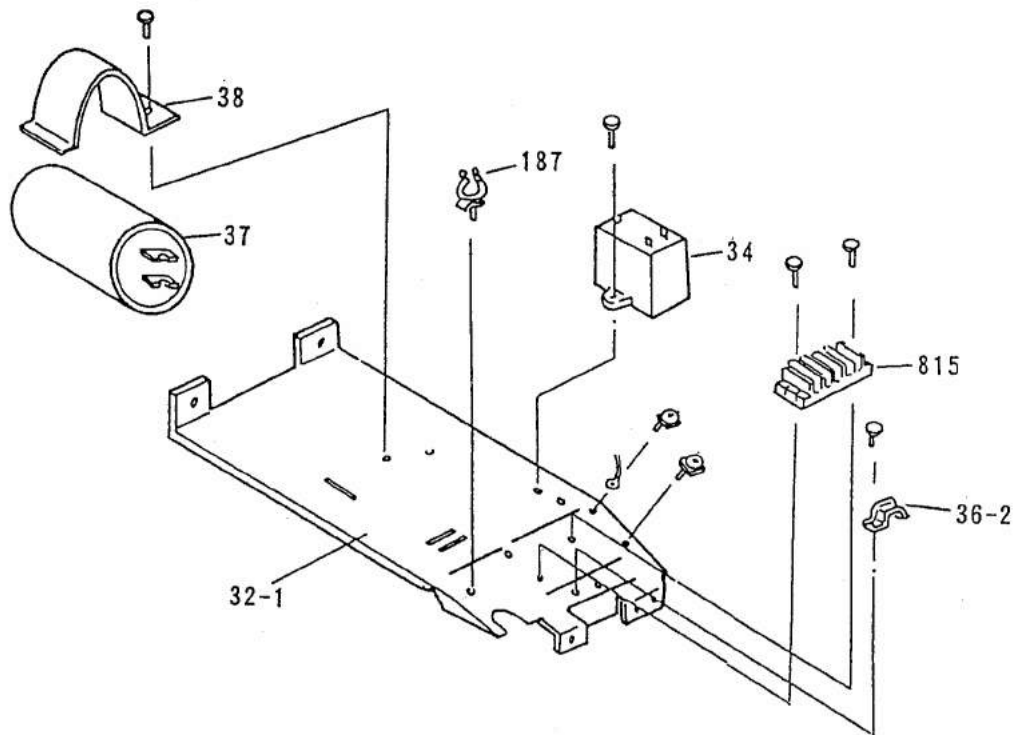


Models : AOY12RZAL
AOY14RZAL



Control Unit

Models : AOY12AZAL
AOY12RZAL
AOY14AZAL
AOY14RZAL



PARTS LIST

OUTDOOR UNIT

When you order parts, please make a photocopy of this page and fill the number of the parts in the "Order" column.

Ref. No.	Description	Part No.				Order Q'ty
		AOY12AZAL	AOY12RZAL	AOY14AZAL	AOY14RZAL	
2	Fan Cover	9350214020	9350214020	9350214020	9350214020	
4	Emblem-Rear "FUJITSU"	9351355005	9351355005	9351355005	9351355005	
5	Cabinet-A, Painted	9303876015	9303876015	9303876015	9303876015	
6	Cabinet-C, Painted	9353549013	9353549013	9353549013	9353549013	
7	Connector Cover	9358011010	9358011010	9358011010	9358011010	
8	Wire Assy(Shield)-D	9350215010	9350215010	9350215010	9350215010	
9	Cabinet-B, Painted	9303874011	9303874011	9303874011	9303874011	
10	Noise Insulation-E	313791106305	313791106305	313791106305	313791106305	
12	Base Assy, Painted	9353452016	9353452016	9353452016	9353452016	
13	3-Way Valve Assy	9358022016	9358022016	9358022016	9358022016	
14	2-Way Valve	9358023013	9358023013	9358023013	9358023013	
15	Dryer	313791082502	9350380022	313791082502	9350380022	
16	Condenser Assy	9353455055	9360672018	9353455055	9360672018	
18	Suction Pipe	9360518002	9360678003	9360518002	9360678003	
19	Capillary Tube	9355641005	—	9355641005	—	
19-2	Joint Pipe (Capillary)	9355644006	—	9355644006	—	
20	Discharge Pipe	9360522009	9358635001	9360522009	9358635001	
21	Discharge Pipe-B	—	9358634004	—	9358634004	
26	Compressor Cover	9354036000	9354036000	9354036000	9354036000	
29	Separate Wall	313986033213	313986033213	313986033213	313986033213	
32-1	Control Box Metal-A	9353595003	9353595003	9353595003	9353595003	
34	Capacitor (Fan Motor)	9357965024	9357965024	9357965024	9357965024	
36-2	Cord Holder Metal	9356362008	9356362008	9356362008	9356362008	
37	Running Capacitor	9306512033	9306512033	9356386035	9356386035	
38	Capacitor Clamp	313468061808	313468061808	313468061808	313468061808	
39	Propeller Fan Assy	9300855013	9300855013	9300855013	9300855013	
41	Fan Motor Assy-Outer	9351333140	9351333140	9351333140	9351333140	
45	Motor Fixing Table Assy	313029311100	313029311100	313029311100	313029311100	
46	Compressor Assy	9360509116	9360509116	9360509123	9360509123	
54	Condensing Pipe	—	9360679000	—	9360679000	
55	Special Nut M8 (For Comp.)	313252257701	313252257701	313252257701	313252257701	
67	Rubber	313659068604	313659068604	313659068604	313659068604	
107	Rubber Seat-A (For Comp.)	313093081402	313093081402	313093081402	313093081402	
108	Sleeve-A (For Comp.)	313093081706	313093081706	313093081706	313093081706	
109	Terminal Cover (For Comp.)	313202059600	313202059600	313202059600	313202059600	
110	Lock Wire	313202059706	313202059706	313202059706	313202059706	
111	Terminal Packing	313202059807	313202059807	313202059807	313202059807	
187	Clamp No.1219	313361271706	313361271706	313361271706	313361271706	
232	Pipe Assy	9355642002	9355642002	9355642002	9355642002	
259	Muffler	—	313755083903	—	313755083903	
271	4-Way Valve Rubber	—	313728251908	—	313728251908	
272	Strainer	—	9350379026	—	9350379026	
330	Inlet Pipe(Cond.) Assy	—	9360674005	—	9360674005	
331	Suction Pipe-D	—	9360673008	—	9360673008	
332	Suction Pipe-E	—	9360790002	—	9360790002	
338	Motor Fixture	313029297108	313029297108	313029297108	313029297108	
343	Solenoid Coil	—	9359616092	—	9359616092	
344	4-Way Valve	—	313943302804	—	313943302804	
347	Noise Insulation-D	313712304109	313712304109	313712304109	313712304109	
360	4-Way Valve Band	—	313986251802	—	313986251802	
371	Process Pipe-B	313142082352	313142082352	313142082352	313142082352	
519	Check Valve Assy	—	9360680006	—	9360680006	
646	Compressor Cover-B	313986355101	313986355101	313986355101	313986355101	
717	Center Plate	9350216017	9350216017	9350216017	9350216017	
815	Terminal-5P	9356497021	9356497021	9356497021	9356497021	
826	Condensing Pipe-B	9353601001	—	9353601001	—	

INDOOR UNIT (Continued)

When you order parts, please make a photocopy of this page and fill the number of the parts in the "Order" column.




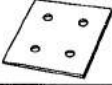
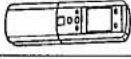

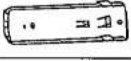

Ref. No.	Description	Part No.				Order Q'ty
		AUY12AGA	AUY12RGA	AUY14AGA	AUY14RGA	
34	Capacitor (Fan Motor)	9357965017	9357965017	9357965017	9357965017	
67	Rubber	9359657002	9359657002	9359657002	9359657002	
117-3	Special Washer M6	313306391007	313306391007	313306391007	313306391007	
127	Drain Hose	9359659013	9359659013	9359659013	9359659013	
138	Separate Wall-A	9359647003	9359647003	9359647003	9359647003	
146	Evaporator Assy	9360009012	9360009012	9360009012	9360009012	
147	Inlet Pipe (Eva.) Assy	9360010018	9360010018	9360010018	9360010018	
160	Drain Pan	9359651000	9359651000	9359651000	9359651000	
164	Fan Motor Assy-IN	9360478016	9360478016	9360478016	9360478016	
184-1	Thermo. Spring-A	313728262708	313728262708	313728262708	313728262708	
185	Rubber Bushing	313005066051	313005066051	313005066051	313005066051	
187	Clamp No. 1219	313361271706	313361271706	313361271706	313361271706	
196	Clamp SKB-150	313035356905	313035356905	313035356905	313035356905	
210	Main Relay	9356781007	9356781007	9356781007	9356781007	
223	Control Box	9359661016	9359661016	9359661016	9359661016	
232	Outlet Pipe(Eva.) Assy	9360011015	9360011015	9360011015	9360011015	
234	Thermistor Assy	9701946037	9701946037	9701946037	9701946037	
235	Thermistor Assy	9701947027	9701947027	9701947027	9701947027	
236	Controller PCB Assy	9701941155	9701941131	9701941155	9701941131	
240	Remote Control Unit	9359913047	9359913030	9359913047	9359913030	
244	Pipe Cover	9359646006	9359646006	9359646006	9359646006	
287	Cap (Power)	9352173011	9352173011	9352173011	9352173011	
301	Clamp NK-2N	313985355201	313985355201	313985355201	313985355201	
313	Hooking Wire	9359983002	9359983002	9359983002	9359983002	
338	Motor Fixture	9359656005	9359656005	9359656005	9359656005	
381	Locking Spacer	313209391506	313209391506	313209391506	313209391506	
395	Supporter (Eva.)	9359669005	9359669005	9359669005	9359669005	
399	Air Duct	9359660002	9359660002	9359660002	9359660002	
411	Supporter-A	9359655008	9359655008	9359655008	9359655008	
430	Clamp NK-7N	313095365602	313095365602	313095365602	313095365602	
457	Drain Pan Support	9359652007	9359652007	9359652007	9359652007	
462	Top Cover Plate	9359642015	9359642015	9359642015	9359642015	
464	Body-A	9359643005	9359643005	9359643005	9359643005	
465	Body-B	9359645009	9359645009	9359645009	9359645009	
467	Drain Port	313005415658	313005415658	313005415658	313005415658	
468	Special Nut-A (Large)	313005446653	313005446653	313005446653	313005446653	
469	Special Nut-B (Small)	313005446759	313005446759	313005446759	313005446759	
470	Separate Wall-B	9359648000	9359648000	9359648000	9359648000	
474	Turbo Fan	9359658009	9359658009	9359658009	9359658009	
475	Turbo Fan Rubber	313005445054	313005445054	313005445054	313005445054	
476-1	Special Nut M8	313005360755	313005360755	313005360755	313005360755	
476-2	Special Washer	301801185049	301801185049	301801185049	301801185049	
476-3	Special Washer	9359954002	9359954002	9359954002	9359954002	
478	Sensor M. Bracket	9359654001	9359654001	9359654001	9359654001	
479	Floot Switch	313005416154	313005416154	313005416154	313005416154	
482	Pump Unit	9359974000	9359974000	9359974000	9359974000	
484	Hanger Metal	9359644002	9359644002	9359644002	9359644002	
488	Drain Pan Plug	9359653004	9359653004	9359653004	9359653004	
495	Clamp No. 2U46	9352715006	9352715006	9352715006	9352715006	
514	Control Box Cover	9359662006	9359662006	9359662006	9359662006	
628	Locking Spacer-B	313005446558	313005446558	313005446558	313005446558	
629	EMI Filter	0400056133	0400056133	0400056133	0400056133	
652-1	Therm. Holder Pipe	313806262805	313806262805	313806262805	313806262805	
743	Remote Control Unit Holder Case	9359955016	9359955016	9359955016	9359955016	
797	Separate Wall-C	9359649007	9359649007	9359649007	9359649007	
798	Pump Hook Bracket	9359650003	9359650003	9359650003	9359650003	
815	Terminal-7P	9358660102	9358660102	9358660102	9358660102	
824-3	Fuse	0600222512	0600222512	0600222512	0600222512	
834	Wire Cover	9359878001	9359878001	9359878001	9359878001	
835	Cushion-A (For Pump)	9352211013	9352211013	9352211013	9352211013	
836	Cushion-B (For Pump)	9356084016	9356084016	9356084016	9356084016	
875	Filter PCB Assy	9702326012	9702326012	9702326012	9702326012	
964	Flare Nut-A	313996239804	313996239804	313996239804	313996239804	
965	Flare Nut-B	9351062019	9351062019	9351062019	9351062019	
967-2	Bonnet-B	9301858006	9301858006	9301858006	9301858006	
989-1	Cord Clamp-A	9359822011	9359822011	9359822011	9359822011	
989-2	Cord Clamp-B	9359823018	9359823018	9359823018	9359823018	

GRILLE ASSY (UTG-UDYA-W)





When you order parts, please make a photocopy of this page and fill the number of the parts in the "Order" column.

Ref. No.	Description	Part No.	Ord. Q' ty
93	Filter	9359632009	
165	Motor Cover	9359623014	
196	Clamp SKB-150	313035356905	
226	Motor Gear	9359629009	
385	Indicator PCB Assy	9702224011	
392	Cover-A	9359622017	
416	Insulation (Panel)-A	9359620006	
417	Insulation (Panel)-B	9359621003	
690	Joint-A	9359626008	
691	Joint-B	9359627005	
692	Joint Shaft	9359625001	
694	Cam Gear	9359628002	
700	Panel	9359619017	
705	Louver	9359624011	
710	Intake Grille	9359631019	
711-1	Filter Clamp-A	9359634003	
711-2	Filter Clamp-B	9359635000	
758	Decoration Plate-A	9360039019	
763	Receiver Cover	9359630005	
776	Grille Stopper	9359633013	
777	Grille Hook	9359761006	
876-2	Step Motor-V	9360307019	




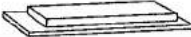
INDOOR UNIT ACCESSORIES

Name and shape	Application	AUY12AGA AUY14AGA	AUY12RGA AUY14RGA
Coupler heat insulation 	For indoor side pipe joint	9350716029 9352766015	9350716029 9352766015
Special nut A (large flange) 	For installing indoor unit	313005446653	313005446653
Special nut B (small flange) 	For installing indoor unit	313005446759	313005446759
Template 	For ceiling hole cutting	9360256003	9360256003
Remote control unit 	Use for air conditioner operation	9359913047	9359913030
Battery (penlight) 	For remote control unit	313187358304	313187358304
Remote control unit holder 	For mounting the remote control unit	9359955016	9359955016
Tapping screw (φ3×12) 	For remote control unit holder installation	301141533125	301141533125

OUTDOOR UNIT ACCESSORIES

Name and shape	Application	AOY12AZAL AOY14AZAL	AOY12RZAL AOY14RZAL
Hexagon wrench 	For air purge	9351228019	9351228019
Pipe (drain) 	For outdoor unit drain piping work (Heat & Cool model only)	—	313728031005
Flexible tube 	For outdoor unit drain piping work (Heat & Cool model only)	—	313013042915
Cap (drain) 	For outdoor unit drain piping work (Heat & Cool model only)	—	313166024302

GRILLE ACCESSORIES

Name and shape	Application	Parts No.
Bolt 	For mounting grille	9360120021
Washer 	For mounting grille	301801155020
Spring washer 	For mounting grille	301821150218
Blower cover insulation 	For discharged air	9360047007