

SETTING MANUAL

WEB MONITORING TOOL for VRF System

UTY-AMGX

Ver. 1.0



CAUTION

Please read the LICENSE AGREEMENT in the manual first.

9708314020-01

FUJITSU GENERAL LIMITED

LICENSE AGREEMENT for “WEB MONITORING TOOL for VRF SYSTEM” (Version 1.0)

IMPORTANT-READ CAREFULLY

This “WEB MONITORING TOOL for VRF SYSTEM” License Agreement (LICENSE AGREEMENT) is a legal agreement between you and Fujitsu General Limited (FGL) for the use of VRF WEB MONITORING TOOL products designated below, which includes computer software and printed materials, and may include online or electronic documentation (SOFTWARE PRODUCT or SOFTWARE). By installing, copying, or otherwise using the SOFTWARE PRODUCT, you accept to be bound by all of the terms and conditions of this LICENSE AGREEMENT. If you do not agree to all of the terms and conditions of this LICENSE AGREEMENT, you may not use the SOFTWARE PRODUCT and shall promptly return the SOFTWARE PRODUCT to the place from which you have obtained it.

1. SOFTWARE PRODUCT LICENSE

The SOFTWARE PRODUCT is protected by copyright laws and international copyright treaties, as well as by other intellectual property laws and treaties. The SOFTWARE PRODUCT is licensed to you, not sold. FGL owns the title, copyright, and other intellectual property rights in the SOFTWARE PRODUCT.

2. GRANT OF LICENSE

FGL hereby grants you the limited, non-exclusive and non-transferable rights only for the purpose of maintaining and testing VRF air-conditioning system products (VRF) provided you comply with all terms and conditions of this LICENSE AGREEMENT.

3. COPYRIGHT

All right, title, and copyright in and to the SOFTWARE PRODUCT, and any copies of the SOFTWARE PRODUCT are owned by FGL. The SOFTWARE PRODUCT is protected by copyright laws and international treaty provisions. Therefore, you may copy the SOFTWARE PRODUCT solely for backup or archival purposes.

4. DESCRIPTION OF OTHER RIGHTS AND LIMITATIONS

(1) USE OF SOFTWARE PRODUCT

You may install and use the enclosed SOFTWARE PRODUCT on a single terminal connected to a single computer. You may not network the SOFTWARE or otherwise use it on more than one computer terminal at the same time. The infrastructure necessary to use this software (PC, accessories, etc.), shall be prepared separately by you.

(2) LIMITATIONS ON REVERSE ENGINEERING, DECOMPIlation, AND DISASSEMBLY

You may not reverse engineer, decompile, or disassemble the SOFTWARE PRODUCT, except and only to the extent that applicable law expressly permits such activity notwithstanding this limitation.

(3) RENTAL

You may not rent or lease the SOFTWARE PRODUCT.

(4) SOFTWARE TRANSFER

You may not transfer the SOFTWARE PRODUCT to any person and/or entity (-ies) either payable or free of charge without the written consent of FGL.

(5) TERMINATION

Without prejudice to any other rights, FGL may terminate this LICENSE AGREEMENT if you fail to comply with the terms and conditions of this LICENSE AGREEMENT.

In such an event, you shall promptly return all originals and copies of the SOFTWARE PRODUCT to FGL.

5. EXPORT RESTRICTIONS

You acknowledge that the SOFTWARE PRODUCT is of Japan origin. You agree that neither you nor your customers intend to or will, directly or indirectly, export or transmit the SOFTWARE PRODUCT to any country to which such export or transmission is restricted by any applicable regulation or statute, without the prior written consent, if required, of the authorized governmental entity as may have jurisdiction over such export or transmission.

6. NO WARRANTY

TO THE MAXIMUM EXTENT PERMITTED BY APPLICABLE LAW, FGL EXPRESSLY DISCLAIMS ANY WARRANTY FOR THE SOFTWARE PRODUCT. THE SOFTWARE PRODUCT AND ANY RELATED DOCUMENTATION IS PROVIDED "AS IS" WITHOUT WARRANTY OF ANY KIND, EITHER EXPRESSED OR IMPLIED, INCLUDING, WITHOUT LIMITATION, THE IMPLIED WARRANTIES OR MERCHANTABILITY OF FITNESS FOR A PARTICULAR PURPOSE. THE ENTIRE RISK ARISING OUT OF USE OR PERFORMANCE OF THE SOFTWARE PRODUCT REMAINS WITH YOU.

7. LIMITATION OF LIABILITY AND CUSTOMER REMEDIES

FGL'S ENTIRE LIABILITY AND YOUR EXCLUSIVE REMEDY UNDER THIS LICENSE AGREEMENT SHALL BE, AT FGL'S OPTION, REPLACEMENT OF THE SOFTWARE WHICH IS RETURNED TO FGL. THIS LICENSE AGREEMENT SHALL ALSO APPLY TO THE REPLACEMENT SOFTWARE SUPPLIED UNDER THIS SECTION 7.

8. NO LIABILITY FOR CONSEQUENTIAL DAMAGES

TO THE MAXIMUM EXTENT PERMITTED BY APPLICABLE LAW, IN NO EVENT SHALL FGL BE LIABLE FOR ANY DAMAGES WHATSOEVER (INCLUDING, WITHOUT LIMITATION, DAMAGES FOR LOSS OF BUSINESS PROFIT, BUSINESS INTERRUPTION, LOSS OF BUSINESS INFORMATION, OR ANY OTHER PECUNIARY LOSS) DIRECT OR INDIRECT, TO YOU OR TO ANY THIRD PARTY, ARISING OUT OF THE USE OR INABILITY TO USE THIS PRODUCT, EVEN IF FGL HAS BEEN ADVISED OF THE POSSIBILITY OF SUCH DAMAGES.

9. ENTIRE AGREEMENT

This LICENSE AGREEMENT (including any addendum or amendment to this LICENSE AGREEMENT included with the SOFTWARE PRODUCT) is the entire agreement between you and FGL relating to the SOFTWARE PRODUCT and supersedes all prior contemporaneous oral or written communications, proposals and representations with respect to the SOFTWARE PRODUCT or any other subject covered by this LICENSE AGREEMENT.

10. INDEMNITY

You agree to indemnify and hold FGL, and its subsidiaries, affiliates, officers, agents, co-branders or other partners, and employees, harmless from any damage, claim or demand, including without limitation reasonable attorneys' fees, made by any third party due to or arising out of your violation of the terms and conditions of this LICENSE AGREEMENT, or your violation of any rights of another person or entity.

11. GOVERNING LAW AND JURISDICTION



To the maximum extent permitted by applicable law, this LICENSE AGREEMENT is governed by the laws of JAPAN. To the maximum extent permitted by applicable law, you and FGL hereby irrevocably submit to the exclusive jurisdiction of the Tokyo District Court and other higher courts having jurisdiction in Japan for the settlement of disputes arising under or in connection with this LICENSE AGREEMENT.

Contents

| | |
|------------------------------------|----------|
| 1. Safety precautions | 4 |
|------------------------------------|----------|


1. Safety precautions

- Before using Web Monitoring Tool, read this “SAFETY PRECAUTIONS” thoroughly to ensure the correct operation.
- This section describes the important safety information to operate Web Monitoring Tool.
- The meanings of “WARNING” and “CAUTION” are explained as follows.

| | |
|---|--|
|  WARNING! | This mark indicates the procedures, which might result in the death of or serious injury to the user or service personnel if improperly performed. |
|  CAUTION! | This mark indicates the procedures, which might result in personal harm to the user or damage to property if improperly performed. |

This manual is for service personnel authorized to use the Web Monitoring Tool. Always keep this manual in an easily accessible place for use by authorized service personnel.

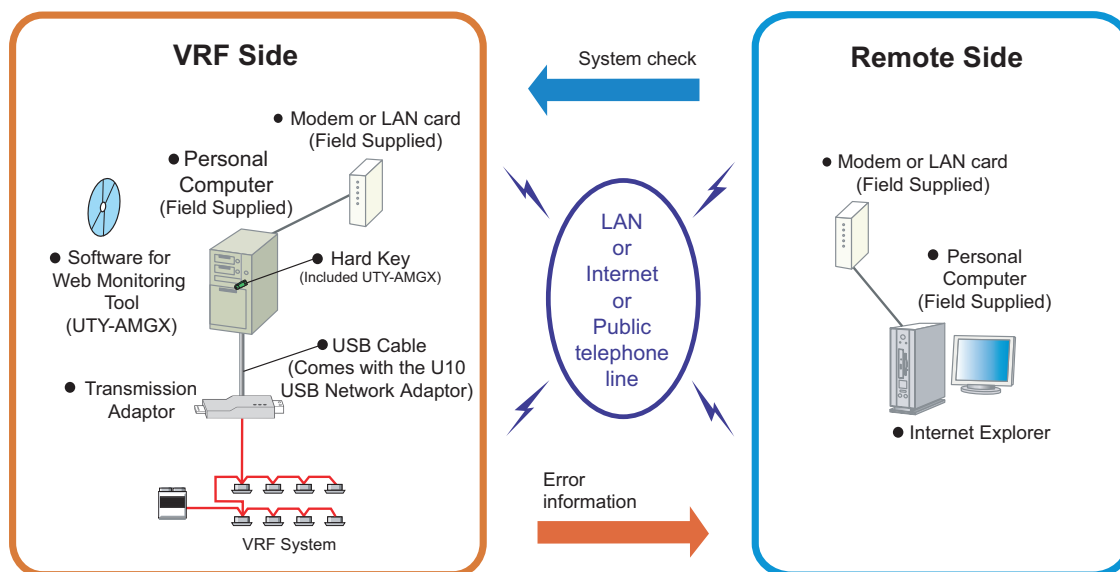
|  WARNING! |
|---|
| 1. When using U10 USB Network Adaptor, follow the instructions given in the manual that comes with the product. |

|  WARNING! |
|--|
| Web Monitoring Tool can control the air-conditioner system on a personal computer. Be careful not to turn off the power supply of the personal computer, or not to finish the application compulsorily during operation. Otherwise, Web Monitoring Tool might malfunction. For personal computer used as Web Monitoring Tool, refer to the instruction manual. |

Contents

2. Outline..... 6

2. Outline



This setting manual explains the setting procedures for the software of Web Monitoring Tools for the VRF control system.

This tool lets you check a VRF System installed at a distant place from the remote side by LAN, internet, public telephone line, and other communications method. If a personal computer connectable to the network and Internet Explorer are available at the remote side, VRF System checks can be carried out at the same level as the Service Tool by simply selecting the time and place.

When an error occurs in the VRF System, the error is displayed at the remote side monitor. If internet is selected as the communications method, the error can be reported to a pre-registered address by e-mail. Moreover, since unit data for up to the last past week is recorded at the VRF side, defect phenomena for on-site repair can be grasped in advance by checking the unit data from a remote place when a defect occurred.

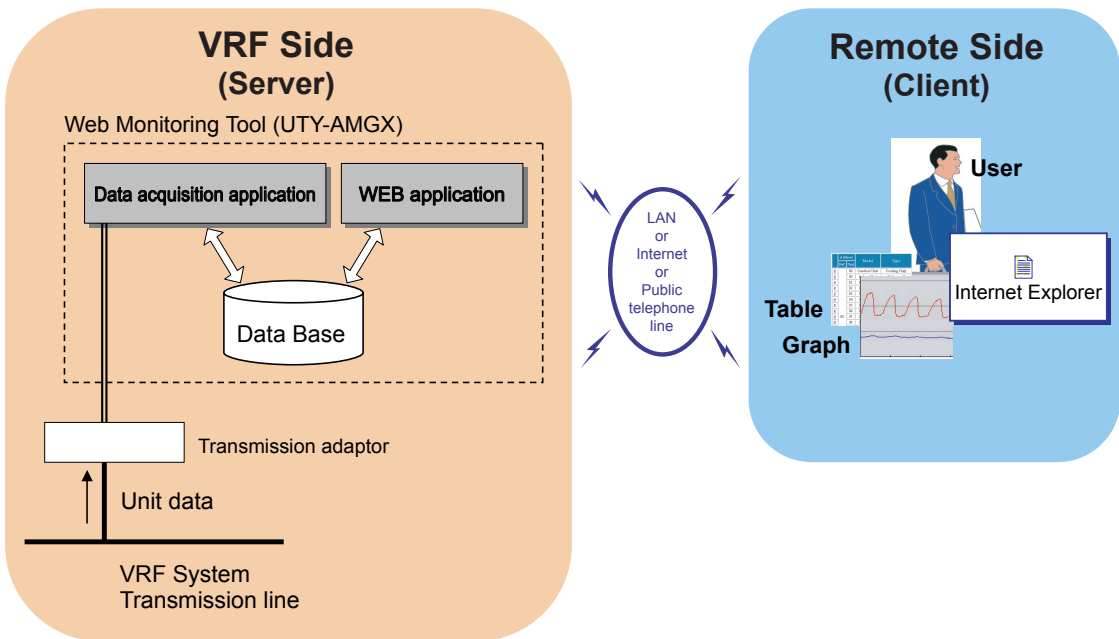
■ Software construction

The Web Monitoring Tool software consists of the two applications **Data acquisition application** and **WEB application**.

The **Data acquisition application** is a program which is made resident when the Web Monitoring Tool is started, and exchanges data with the VRF System transmission line. It also records the received unit data to a database.



The **WEB application** is a Web server and a collection of server side program and scripts which converts the acquired Unit data to Table and Graph, and displays them to a browser (Internet Explorer) upon request from remote side. It also converts operations input from the User and passes them to the Data acquisition application through the Database. In this manual, Web application will refer to the collection of server side program and scripts.



Note • Hereinafter, the following will be used in the descriptions in this setting manual:

| | | |
|-------------|---|--------|
| VRF Side | → | Server |
| Remote Side | → | Client |


Contents

| | |
|------------------------------------|-----------|
| 3. Installation | 10 |
| 3-1 Precautions | 10 |
| 3-2 Recommended specs | 10 |
| 3-3 Installation flow..... | 11 |
| 3-3-1 Server | 11 |
| 3-3-2 Client..... | 12 |

3. Installation

3-1 Precautions

- This product requires the use of one of the following optional transmission adaptors. Procure them in advance.

| Name & Shapes | Q'ty | Remark |
|--|---|---|
| Transmission Adaptor (U10 USB Network Interface -TP/FT-10 Channel)  (Field Supply) | 1 to 4 Procure the necessary number in accordance with the number of connection systems. | Model : 75010R (Echelon Corporation) |

3-2 Recommended specs

This tool operates in the environment below.

| | | |
|-------------------|------------------|---|
| Personal Computer | | AT compatible machine that runs Microsoft® Windows® |
| | Operating System | Microsoft® Windows® 2000 Professional (English version / Service pack4 or later) Microsoft® Windows® XP Professional (English version / Service pack2 or later) Microsoft® Windows® Vista Home Premium, Business, Ultimate Edition. (English version) |
| | CPU | Intel® Pentium® / Celeron®, AMD Athlon™ / Duron™ 1GHz or higher |
| | HDD | 4.1 GB or more of free space |
| | Memory | 1GB or more |
| | Interface | USB port is required for each of the following; <ul style="list-style-type: none"> • Wibu Key (Software protection key) • Echelon® U10 USB Network Interface (Required for each VRF Network) • Ethernet port is required for remote connection using internet. |
| Software | | Internet Explorer 6.0 or 7.0 / Adobe® Acrobat® Reader 4.0 or later |

3-3 Installation flow

3-3-1 Server

WARNING!

- Web Monitoring Tool is tested to install and operate under new Windows environment. When program executional environment of Windows is corrupted or abnormal, or other softwares that interfere with the operation of Web Monitoring Tool is installed or running, Web Monitoring Tool may not install or run properly. It is usually extremely difficult to detect such conditions, if it occurs.
- Web Monitoring Tool product is provided with softwares, drivers, components listed below. If the same kind of softwares, drivers, components with different version is installed on the same PC, Web Monitoring Tool may not install or run properly.
 - 1) .NET Framework
 - 2) Internet Information Services (IIS)
 - 3) Microsoft® Data Access Components (MDAC)
 - 4) Microsoft® SQL Server 2005 Express
- If "Program Files" folder is compressed or encrypted, Microsoft® SQL Server 2005 Express cannot be installed. Release the settings before installation as follows:
Start "Explorer" → right-click "Program Files" folder → select "properties" → click "Advanced..." → release the check marks of the "Compress or Encrypt attributes".

Hardware installation

Transmission adaptor installation



Software installation

(5-1) (5-2)

Insert installation CD



Microsoft® Net Framework 2.0 setup
Microsoft Data Access Components 2.8 (MDAC) setup
Microsoft® SQL Server 2005 Express setup



Message confirming the installation of Adobe Acrobat Reader

Continue

Cancel

Installer terminates



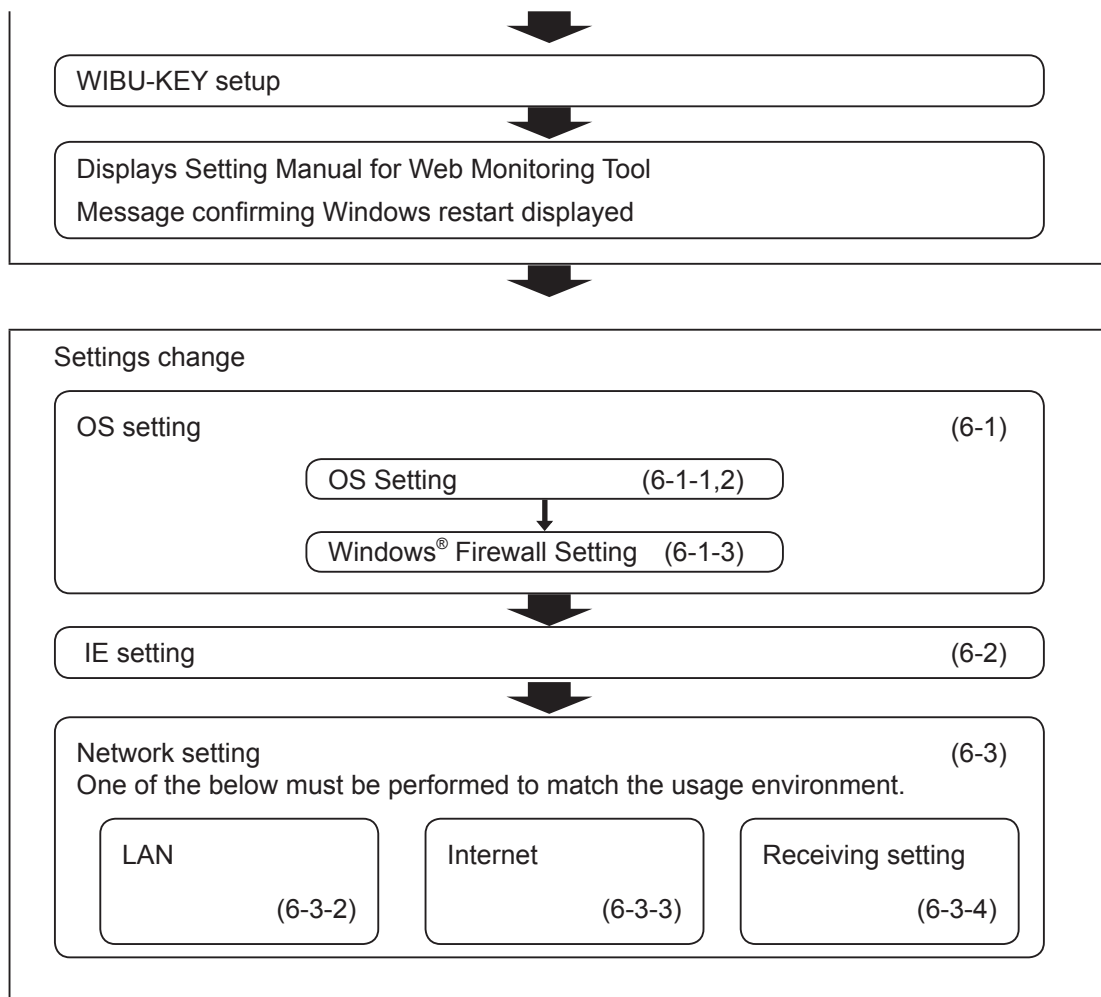
Internet Information Services (IIS) setup



IIS mapping information restoration

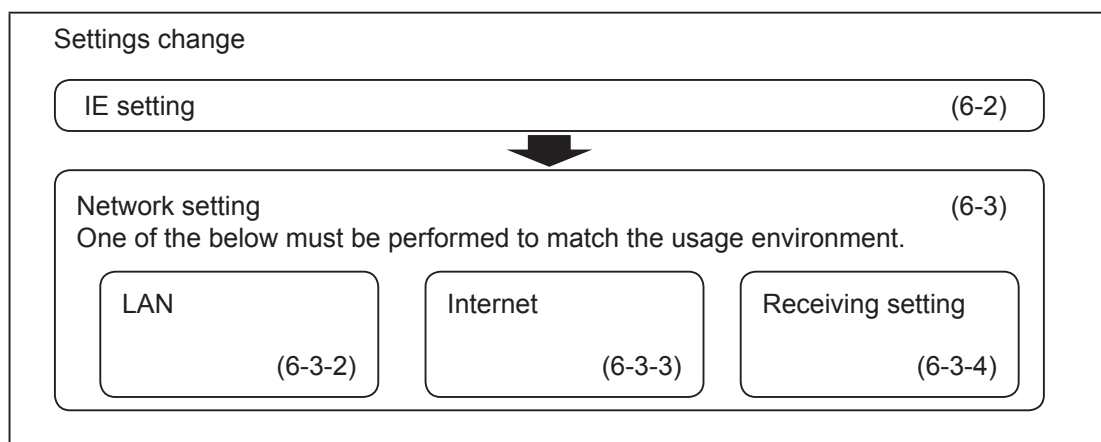


Web Monitoring Tool for VRF System Ver 1.0 setup



- Only English version MDAC and Microsoft® SQL Server 2005 Express component is compliant with this product.
Operation cannot be guaranteed when other language version is used.
- Have installation performed by a user belonging to the Administrators group.

3-3-2 Client

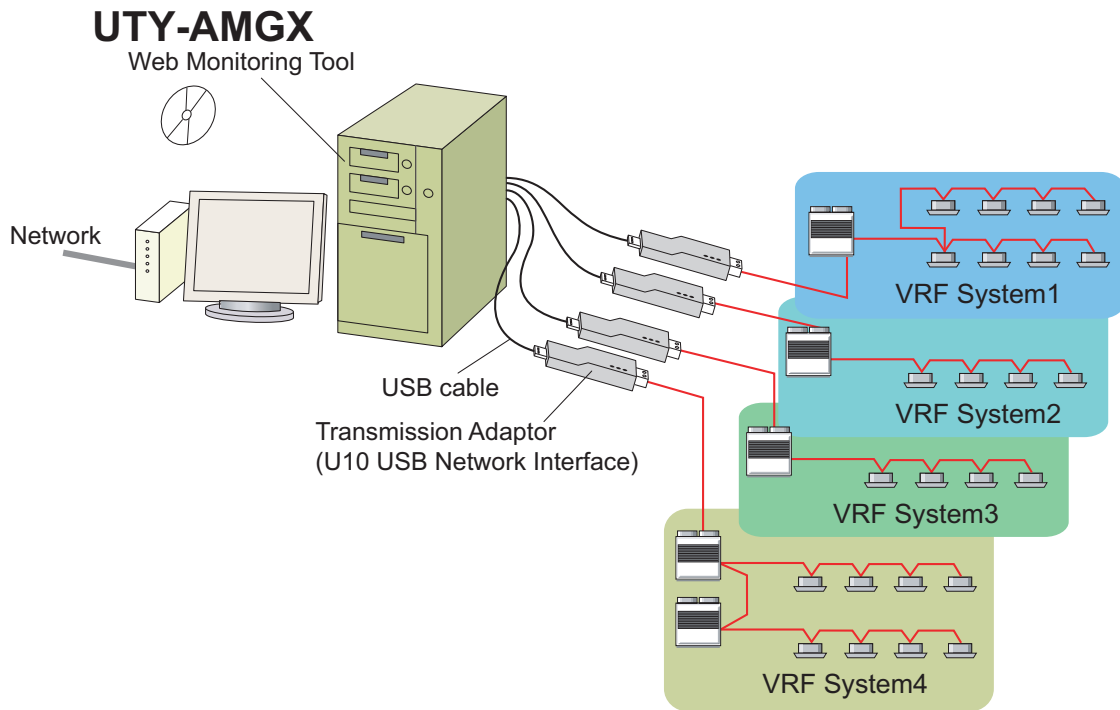


Contents

| | |
|---|-----------|
| 4. Hardware installation..... | 14 |
| 4-1 Transmission adaptor installation..... | 14 |
| 4-2 Turning on the power | 15 |

4. Hardware installation (Server)

4-1 Transmission adaptor installation

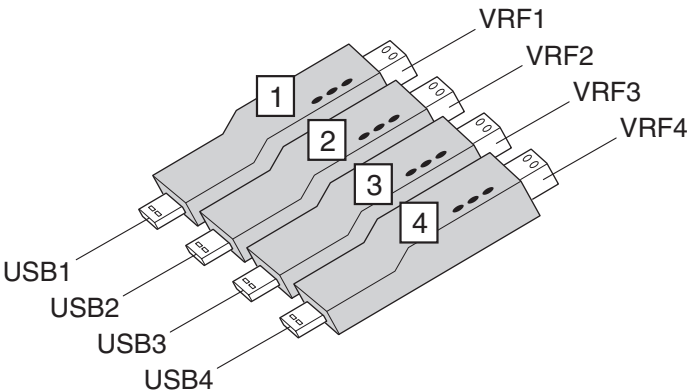


The Web Monitoring Tool can connect up to four VRF systems. Since one transmission adaptor connects to one system, up to four transmission adaptors are connected.

U10 USB Network Interface

This transmission adaptor is connected using the USB port of a personal computer.
To use this product, turn on the power of the PC and install necessary drivers/software for this product (BEFORE connecting it to any USB port), following the ***QUICK START*** enclosed with this product.

- ① When using multiple transmission adaptors, connect the nth VRF System to the nth transmission adaptor, or attach a label so that the transmission adaptors can be identified. (Because there is an item which sets what number transmission adaptor is connected to what number USB port at software starting.)



Keeping a record of a table such as shown below is recommended.

| USB port | Adaptor No. | VRF System No. |
|----------|-------------|----------------|
| USB1 | Adaptor1 | VRF1 |
| USB2 | Adaptor2 | VRF2 |
| USB3 | Adaptor3 | VRF3 |
| USB4 | Adaptor4 | VRF4 |

- ② Connect the transmission adaptor to the personal computer USB port.
When there are multiple transmission adaptors, connect the nth transmission adaptor to the nth USB port in THAT ORDER.


4-2 Turning on the power

WARNING!

Do not turn on the power until all installation work is completed.

Once the wiring has been installed, the power can be turned on. Follow the procedure below for turning on the power.

- ① Turn on the power for all connected indoor units.
- ② Turn on the power for all connected outdoor units.
- ③ Connect U10 USB Network Interface
(Driver must be installed following the procedure in section 4-1 before connecting). *1

Note *1  Make sure that USB equipment (USB hub, etc.) that this product is connected to, is not overloaded (power supplied thru the interface does not exceeds the maximum limit).

- ④ Turn on the power for Web Monitoring Tool PC, if it is not yet turned on.

Contents

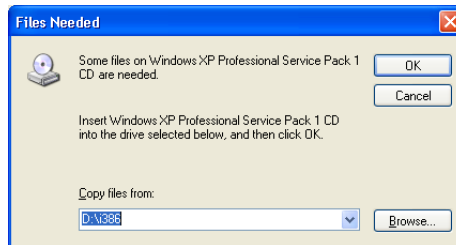
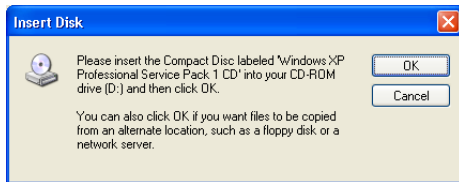
| | |
|---|-----------|
| 5. Software Installation & Removal | 18 |
| 5-1 Installation Notes | 18 |
| 5-2 Software Installation | 19 |
| 5-3 Software Removal | 20 |
| 5-3-1 Windows® 2000 & XP | 20 |
| 5-3-2 Windows® Vista | 22 |

5. Software Installation & Removal

5-1 Installation Notes

Before starting the installation of this product, check each of the followings.

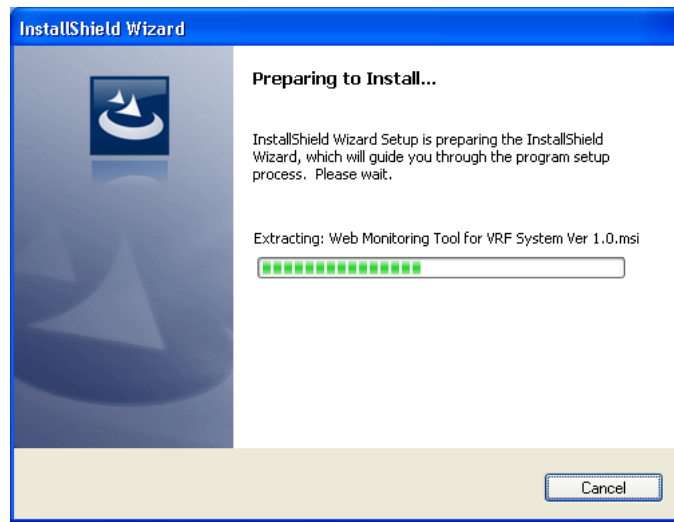
- Install Adobe Acrobat Reader (Ver. 4.0 or later) prior to the installation. (Adobe Acrobat Reader does not come with this product).
- Have the installation CD of the Windows version (Windows® XP, Windows® 2000 or Windows® Vista) used for the PC ready. This will be required during the installation of IIS. If the following screen is displayed during IIS setup, you must follow the instruction on the screen. If you cancel the installation, setup will not be completed properly.



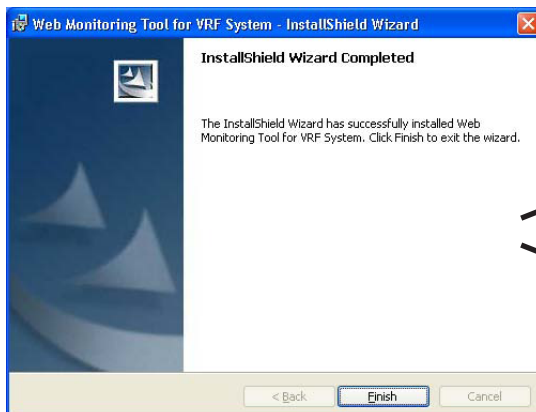
- If one of the following product is already installed, remove it first. Also remove it when re-installing other software components such as IIS, MSDE and WIBU-Key drivers. Refer “5-3 Software Removal” for how to remove these products.
 - Service Tool for VRF System (UTR-YSTC) Ver. 3.0 or later
 - Service Tool for VRF System (UTR-ASGX) Ver. 1.0
 - Web Monitoring Tool for VRF System (UTR-YMSA) Ver. 3.0 or later
 - Web Monitoring Tool for VRF System (UTY-AMGX) Ver. 1.0
- Do NOT insert WIBU-Key (Software protection key) enclosed with this product to the PC until product installation is completed.
- You are required to login to the computer as Administrator (or equivalent) to the PC to install this product.
- Stop all running programs before you start the installation.
- If Anti-Virus software product is installed, temporarily disable the software during the installation of this product.
- Please delete “Temporary Internet Files”.
IE menu [tools] → [Internet Options ...] → [General] tab → Press [Delete Files ...] button. If [Delete Files] message screen is displayed, check [Delete all offline content] and press “OK”.

5-2 Software Installation

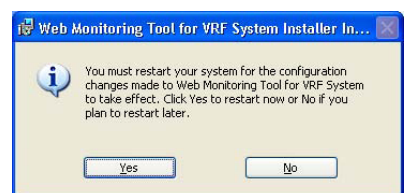
- ① Insert the CD for the “Web Monitoring Tool for VRF System Ver. 1.0” into the CD drive of the PC you are about to install. Installation program starts automatically.
- ② If installation program does not start, double click the “setup.exe” stored in the root directory of the CD drive with the mouse.



- ③ After installation starts, follow the direction on the screen, which will guide you through the installation.
- ④ When installation program ends, Setting Manual for this product and “Windows Restart Confirmation Message” will appear. If you have not completed the remaining setup procedures described in the next section (“6. Setting”) of the Setting Manual yet, do NOT restart the Windows. Complete the remaining setup procedures according to the description in the Setting Manual displayed on the screen first.



Displaying Setting manual
(PDF file).



⑤ After all the setup is completed, restart the Windows®.

Note





- Operation to be performed after inserting WIBU-Key (Software protection key) and when the “Found New Hardware Wizard” screen appears.
 - 1 From the 3 Windows Update Options, select “No, not this time”. Then click “Next” to continue. This dialog may not always show.
 - 2 Select “Install the software automatically (Recommended).”. Then click “Next” to continue.
 - 3 When completion dialog appears, click “Finish”.
- When installing on Windows® Vista ,you may be asked for permission to continue with the operation.
In such cases, select “continue”.
- Some operation may take long time . Please wait at least a couple of minutes.

5-3 Software Removal

Before executing this procedure, be sure to stop the Web Monitoring Tool program if it is running. Also, make sure that WIBU-Key is not inserted to the PC.

5-3-1 Windows® 2000 & XP

① Open  → [Control Panel] → [Add or Remove Programs], and then remove the following programs.

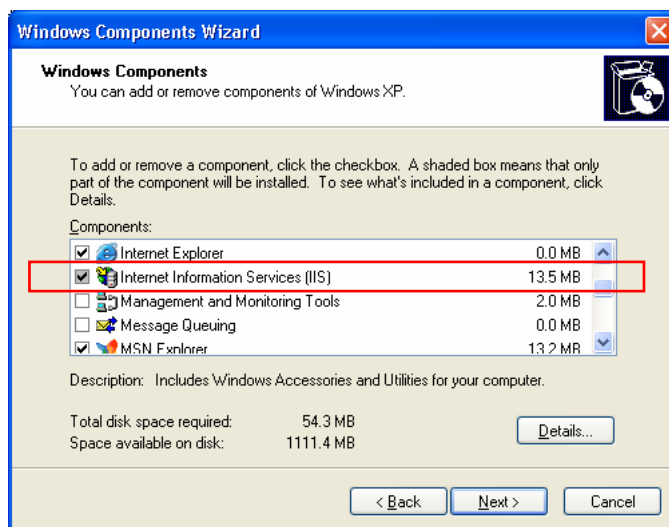
② Select the program to be removed from the list below and click  .

| Target software | Program name |
|--|---|
| MSDE2000 | Microsoft® SQL Server Desktop Engine |
| Microsoft SQL Server Express 2005 | Microsoft® SQL Server 2005 Microsoft® SQL Server Native Client Microsoft® SQL Server Setup Support Files (English) Microsoft® SQL Server VSS Writer |
| WIBU-KEY | WIBU-KEY Setup (WIBU-KEY Remove) |
| Service Tool (UTR-YSTC) Service Tool (UTY-ASGX) | Service Tool for VRF System (Data acquisition) Service Tool for VRF System (Web) Service Tool for VRF System Service Tool for VRF System Ver x.x |
| Web Monitoring Tool (UTR-YMSA) Web Monitoring Tool (UTY-AMGX) | Web Monitoring Tool for VRF System (Data acquisition) Web Monitoring Tool for VRF System (Web) Web Monitoring Tool for VRF System Web Monitoring Tool for VRF System Ver x.x |
| U10 USB Network Interface driver | Echelon Open LDV x.x |

**Note**

- Programs to be deleted depends on the version of Service Tool or Web Monitoring Tool that is already installed. Not all of the programs listed above may appear.
- If you have removed Microsoft SQL Server Express 2005, make sure that you have deleted the following installation folder.
[Target folder] Installation drive: \\Program files\\Microsoft SQL Sever\\MSSQL.1



- ③ Uninstall [IIS] from [Add/Remove Windows Components] of [Add/Remove Programs] in the Control Panel. (Remove “check” and follow the direction on the screen.)

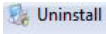
**Note**

For IIS, do not remove it unless there is a definite need.
If for certain reason, you have to remove IIS, remove Service Tool/Web Monitoring Tool first before removing IIS.

- ④ If removal is completed, restart the Windows®.

5-3-2 Windows® Vista

① Open  →  → [Program and Features] and then remove the following programs.

② Select the program to be removed from the list below and click  .

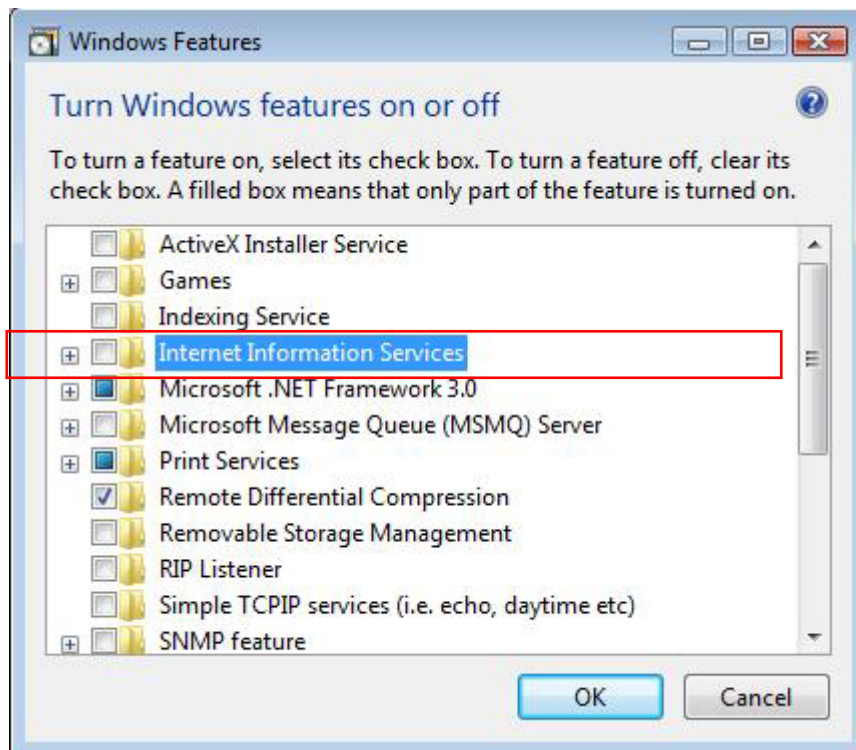
| Target software | Program name |
|-----------------------------------|--|
| Service Tool | Service Tool for VRF System Ver x.x |
| Web Monitoring Tool | Web Monitoring Tool for VRF System Ver x.x |
| Microsoft SQL Server Express 2005 | Microsoft® SQL Server 2005 Microsoft® SQL Server Native Client Microsoft® SQL Server Setup Support Files (English) Microsoft® SQL Server VSS Writer |
| U10 USB Network Interface driver | Echelon OpenLDV x.x |
| WIBU-KEY | WIBU-KEY Setup (WIBU-KEY Remove) |

Note



- Programs to be deleted depends on the version of Service Tool or Web Monitoring Tool that is already installed. Not all of the programs listed above may appear.
- If you have removed Microsoft SQL Server Express 2005, make sure that you have deleted the following installation folder.
[Target folder] Installation drive: \\Program files\\Microsoft SQL Sever\\MSSQL.1

- ③ Turn off [Internet Information Service] from [Turn Windows features on or off] of [Programs and Features] in the Control Panel. (Clear corresponding check box, press “OK” and follow the direction on the screen.)
In the Control Panel, select “Classic View”.



- ④ Restart the Windows.

Contents


| | |
|--|-----------|
| 6. Setting (Server/Client) | 26 |
| 6-1 Operating System setting | 26 |
| 6-1-1 Windows® 2000 & XP | 26 |
| 6-1-2 Windows® Vista | 27 |
| 6-1-3 Windows® Firewall setting | 28 |
| 6-2 Internet Explorer setting | 32 |
| 6-3 Network setting | 38 |
| 6-3-1 Network connection modes | 38 |
| 6-3-2 LAN connection | 40 |
| 6-3-3 Internet connection | 43 |
| 6-3-4 Incoming connection | 43 |
| 6-3-5 Dial-up setting | 52 |
| 6-4 Automatic starting | 58 |

6. Setting (Server/Client)

6-1 Operating System setting

6-1-1 Windows® 2000 & XP

■ Regional option

- ① Open the regional setting screen by sequentially selecting the menus as follows:
 → [Control Panel] → [Date, Time, Language, and Regional Options]
→ [Regional and Language Options]



- When the control panel display format is Classic View, select the menus in the following order:



→ [Control Panel] → [Regional and Language Options]

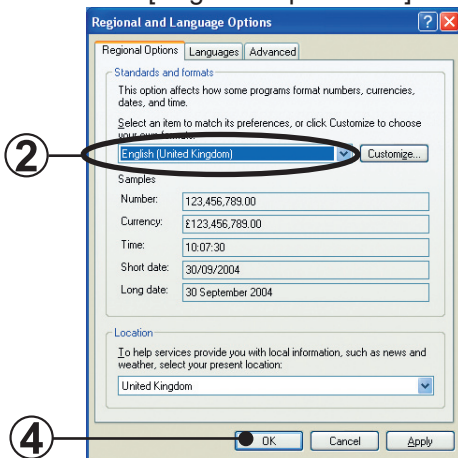
- ② ③ The screen shown below is displayed.
Select English (United Kingdom) at the Standard and formats area of the Regional Options tab.

Select English (United Kingdom) at the Language for non-Unicode programs of the Advanced tab.

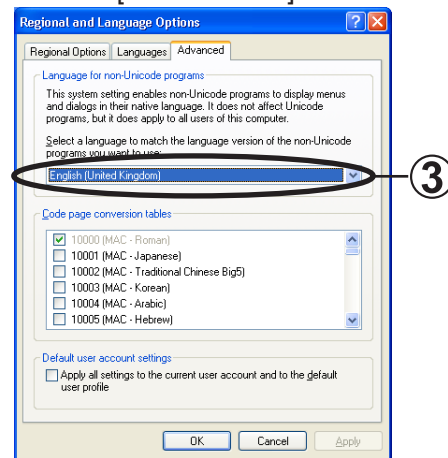
For Windows®2000 :Click Set default... button of the General tab.

Select English (United Kingdom) at the Select System Locale screen.

[Regional Options tab]



[Advanced tab]



- Do not change the settings clicking the [Customize...] button. Set the settings as follows, if by chance, the current settings differs.

[Numbers].....Decimal symbol: "." (dot)

[Time].....Time separator: ":" (colon)

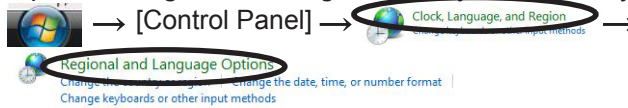
[Date].....Date separator: "/" (slash)

- ④ Click  .

6-1-2 Windows® Vista

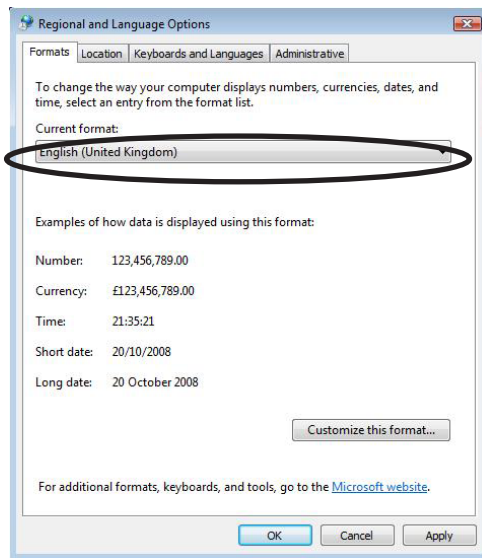
■ Regional option

- ① Open the regional setting screen by sequentially selecting the menu as follows.



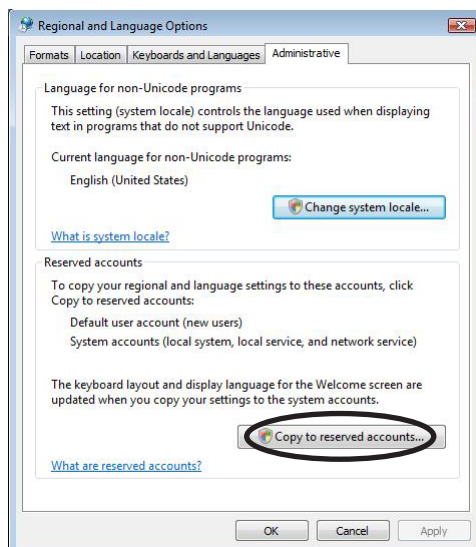
- ② The screen shown below is displayed.

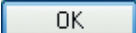
Select English (United Kingdom) at the Current format area of the Formats tab.

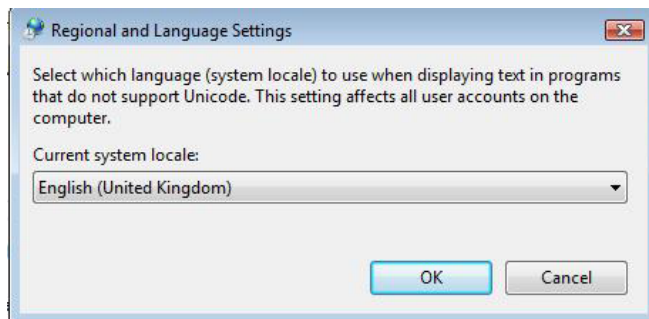


- ③ Select Administrative tab and click  in the Language for non-Unicode programs area.

If security confirmation screen appears, press "Continue".



Select English (United Kingdom) for the Current system locale in the Regional and Language Settings and click  .



Note Do not change the settings clicking the [Customize...] button. Set the settings as follows, if by chance, the current settings differs.



[Numbers].....Decimal symbol: "." (dot)
[Time].....Time separator: ":" (colon)
[Date].....Date separator: "/" (slash)


④ Click  .

6-1-3 Windows® Firewall setting

For Windows® XP SP2 and later versions and for Windows® Vista, the Windows® Firewall setting must be changed.


① Open the Windows® Firewall setting screen by sequentially selecting the menus as follows:

- For Windows® 2000 & XP

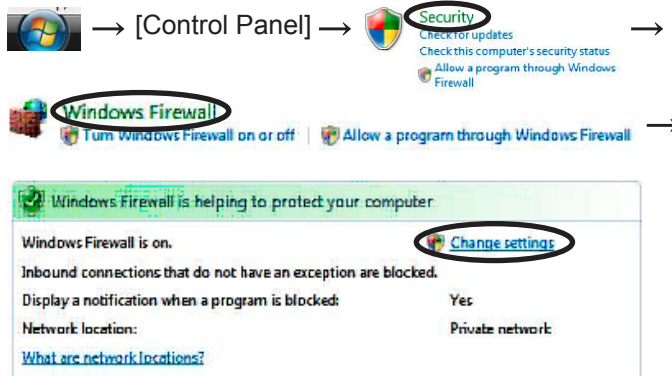
 → [Control Panel] → [Security Center] → [Windows® Firewall]

Note • When the control panel display format is Classic View, select the menus in the following order:



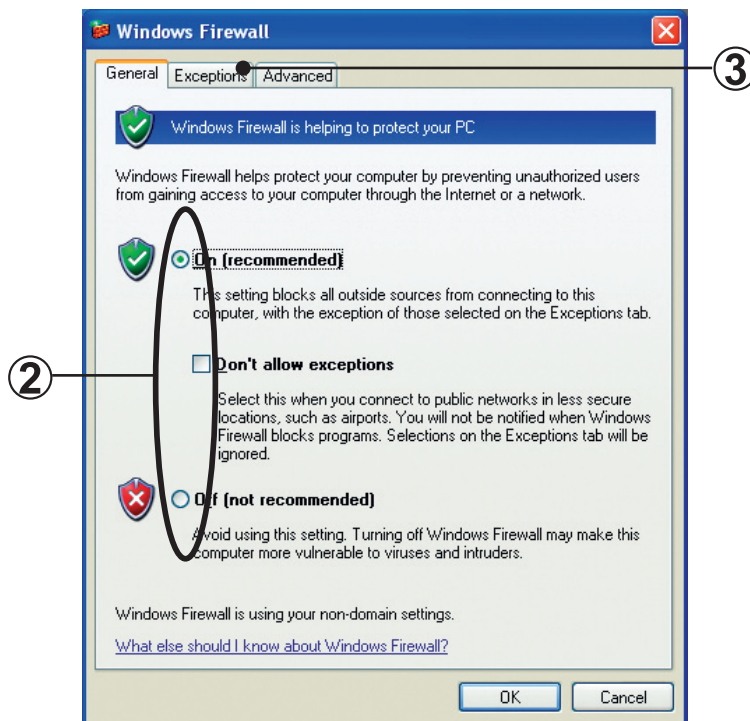
 → [Control Panel] → [Windows® Firewall]

- For Windows® Vista



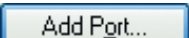
If security confirmation screen appears, press “Continue”.

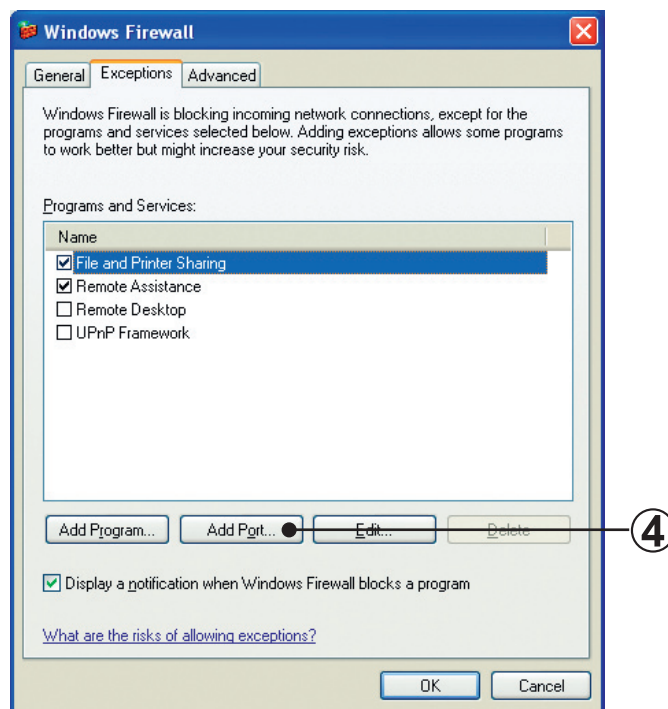
- ② The screen shown below is displayed.
When “On recommended” is selected, proceed as described below.
When “Off not recommended” is selected, setting does not have to be changed.
Go to par. 6-2 Internet Explorer setting.



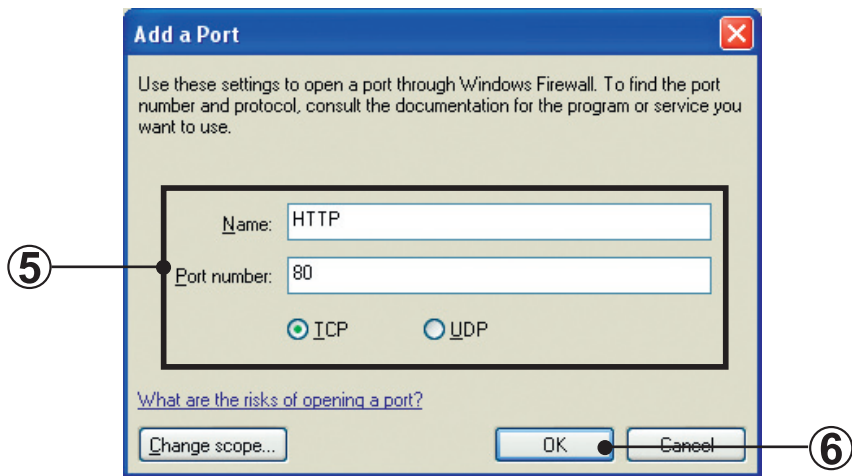
③ Click the Exceptions tab.

④ The screen shown below is displayed.

Click .



- ⑤ The screen shown below is displayed.

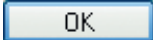


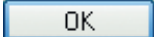
Input the following:

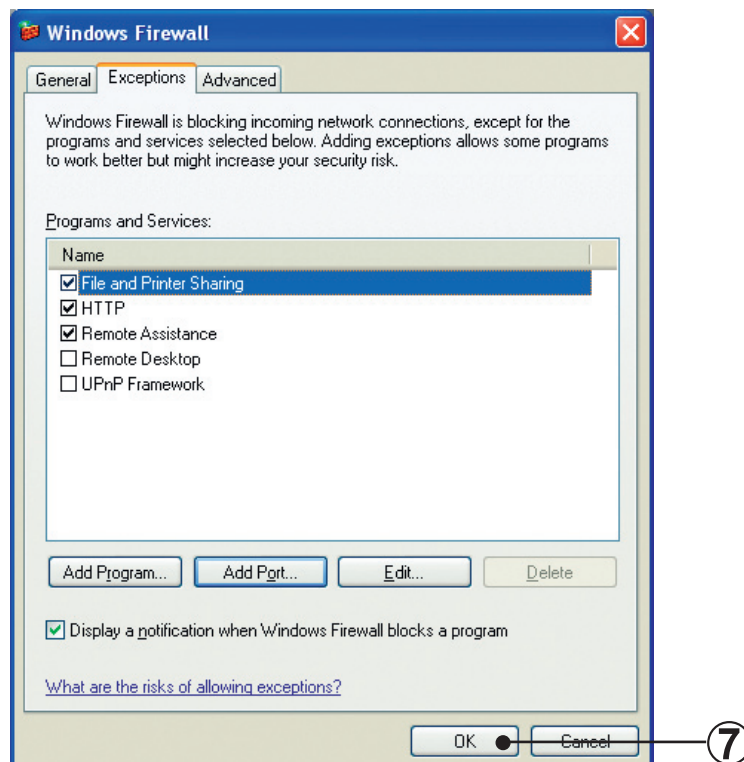
Name : HTTP

Port number : 80

Select "TCP".

- ⑥ Click . The screen closes.

- ⑦ The screen shown below is displayed.
Confirm that HTTP in the Programs and Services list is checked.
Finish setting by clicking .

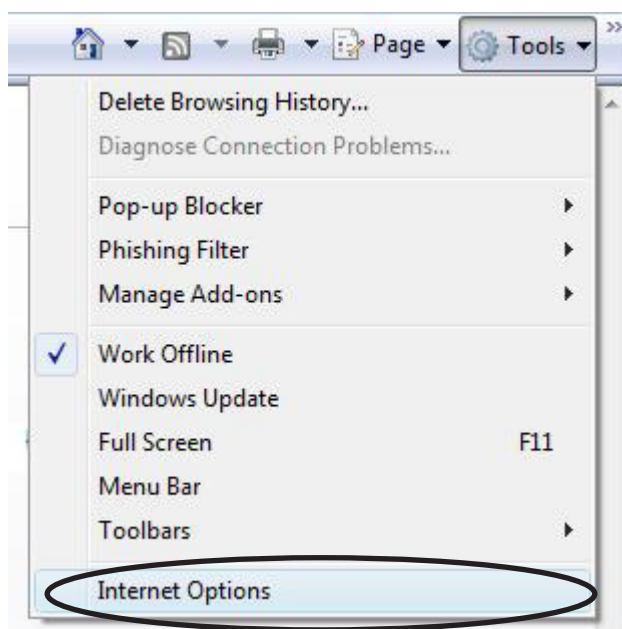


6-2 Internet Explorer setting

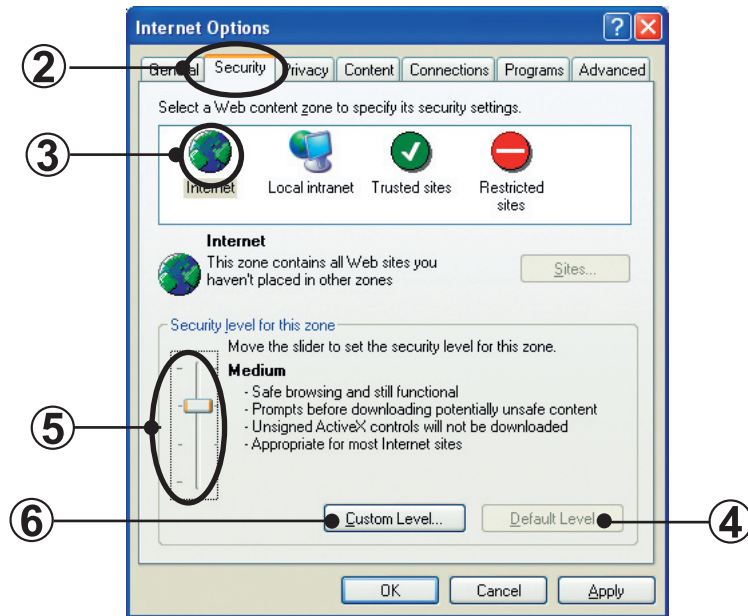
- 1 Start Internet Explorer, and select the following from the menu bar.
[Tools] → [Internet Options...]



- Internet Explorer 7 setting



- ② The screen shown below is displayed.
Select the Security tab.

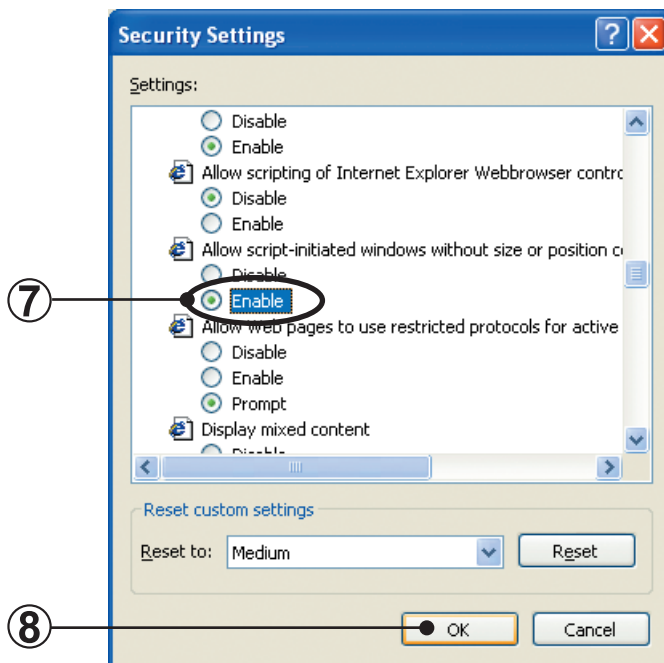


- ③ Select Internet.
- ④ Click Default Level .
- ⑤ Set the slider that indicates the Security Level to Medium or Medium-high.

- ⑥ For Windows® XP SP2 and later versions or for Windows® Vista, perform steps ⑥ thru ⑨ .
Otherwise, advance to step ⑩ .

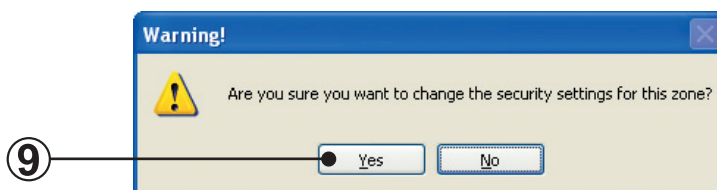
Click .

- ⑦ The screen shown below is displayed.
Set "Allow script-initiated windows without size or position constraints" to Enable.

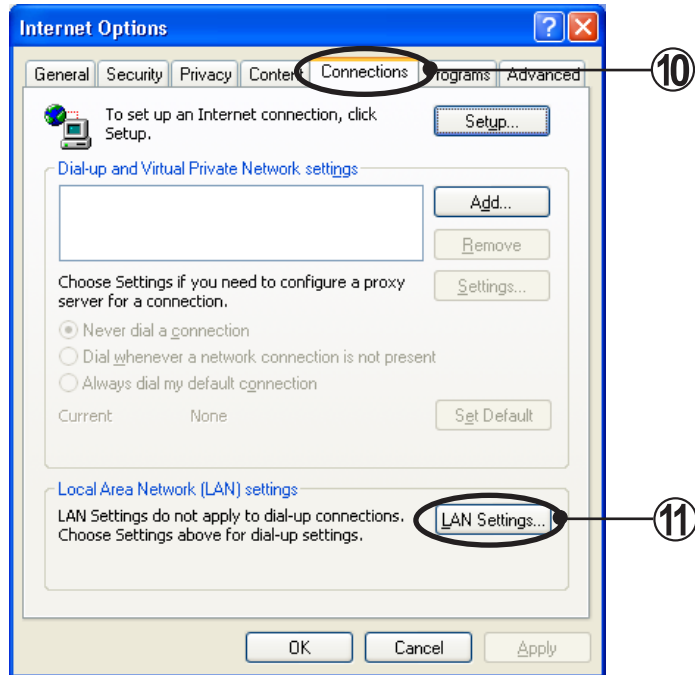


- ⑧ Click .

- ⑨ The screen shown below is displayed.
Click .

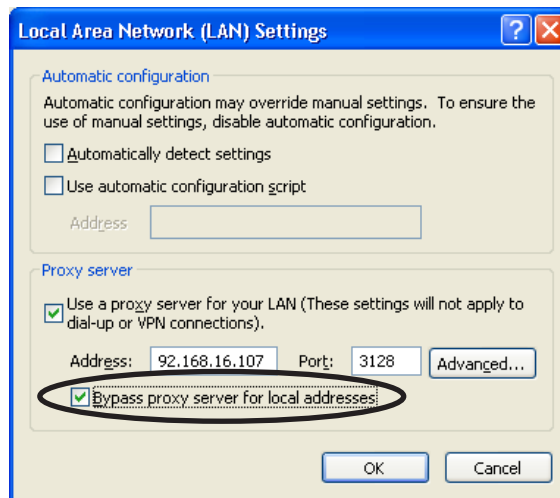


- ⑩ The screen shown below is displayed.
Select the Connections tab.

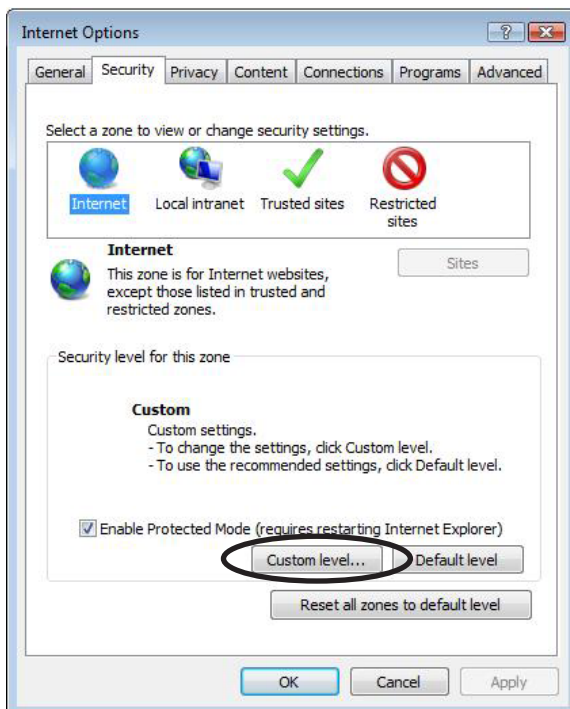


- ⑪ Click **LAN Settings...** .

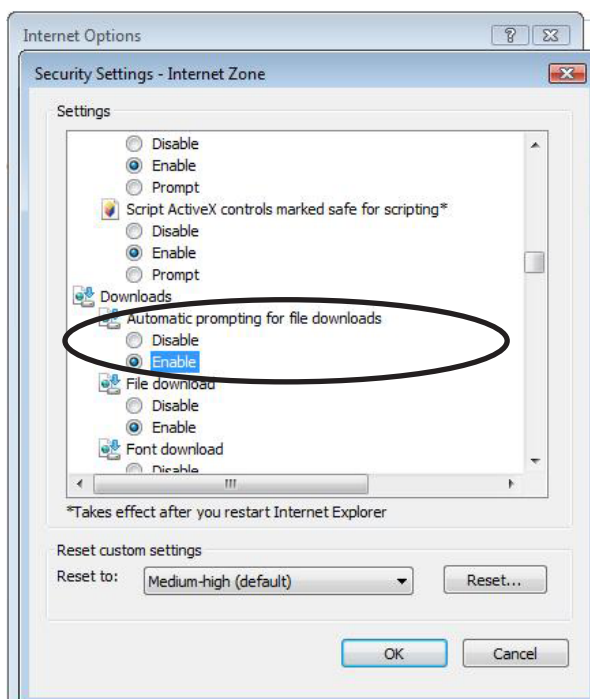
- ⑫ The screen shown below is displayed.
If you are using a proxy server, check on the [Bypass proxy server for local addresses]
and press **OK** .



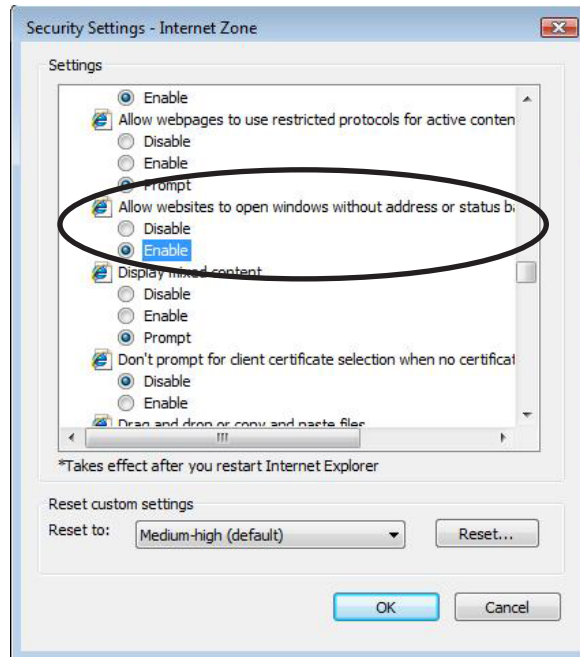
- 13 For Windows® Vista or Internet Explorer 7 do the following.
Select the Security tab, press “Custom level...”.

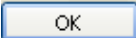


Select enable for “Automatic prompting for file downloads”.



Select enable for “Allow websites to open windows without address or status bars”.



⑭ Finish setup by clicking  in the Internet Options window.

6-3 Network setting

6-3-1 Network connection modes

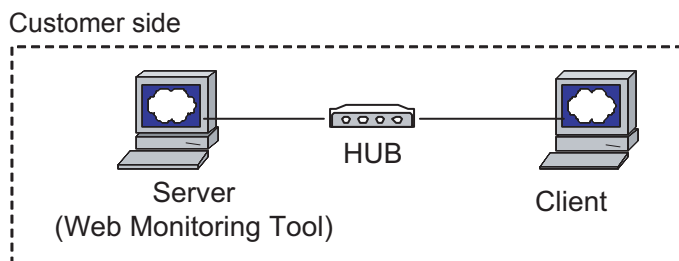
The Web Monitoring Tool can be used in the following network connection modes:

- **LAN connection**

In this mode, the Web Monitoring Tool can be accessed by multiple terminals on the user's premises connected by intranet.

Required environment : LAN connection environment

- Network card
- LAN cable
- Hubs or Routers



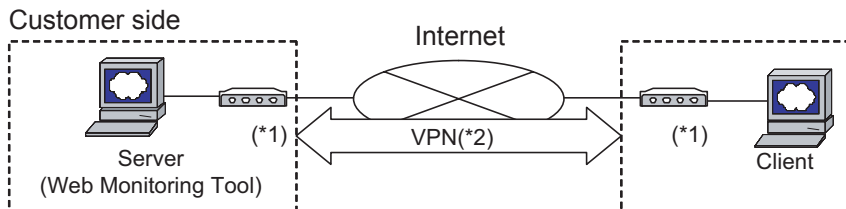
→ See par. 6-3-2 LAN connection.

- **Internet connection**

In this mode, a server with Web Monitoring Tool installed on the user's premises is accessed over the internet.

Required environment : Internet connection environment

- Contract with internet connection provider
Subscription to global IP address service or dynamic DNS service is necessary.
Make a contract with a provider of either one of these services.
- Access environment up to the provider
A telephone line or special cable must be installed. Modem, router, and other devices may also be necessary.
- Firewall setting change (when installing)
The setting must be changed so that access from the outside is possible.



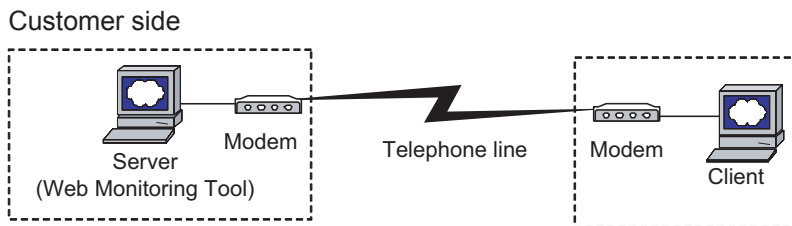
→ See par. 6-3-3 Internet connection.

- Note** *1 Install a modem, router, and other devices, depending on the access environment up to the provider.
- *2 VPN can also be used when higher security is required.
For details, refer to the Windows® guide or consult network administrator in charge of the premises.

- **Incoming connection**

This mode uses a telephone line to dial-up connect to a server installed on the user's premises.

Required environment: Telephone line, modem




→ Server side See par. 6-3-4 Incoming setting.

Client side See par. 6-3-5 Dial-up setting.

6-3-2 LAN connection

Perform LAN setting to match the usage environment. Contact the network administrator for the IP address, subnet mask, and other settings.


- 1 Display the LAN setting screen by sequentially selecting the menus as follows:
 - Windows® 2000 & XP

 → [Control Panel] → [Network and Internet Connections] → [Network Connections] → [Local Area Connection]

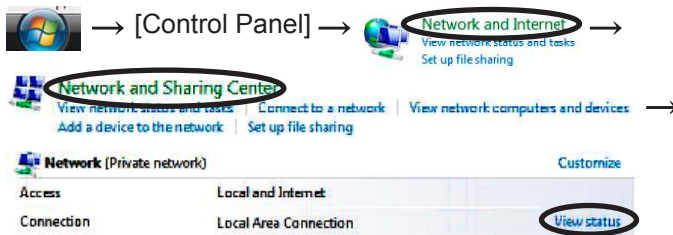
Note



- When the control panel display format is Classic View, select the menus in the following order:

 → [Control Panel] → [Network Connections] → [Local Area Connection]

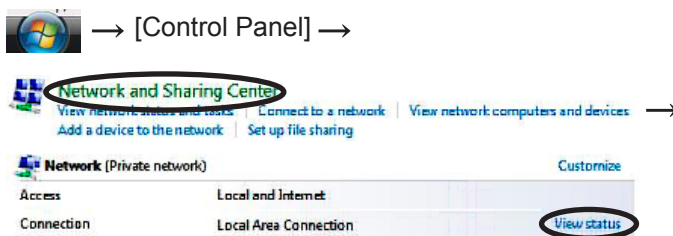
- Windows® Vista



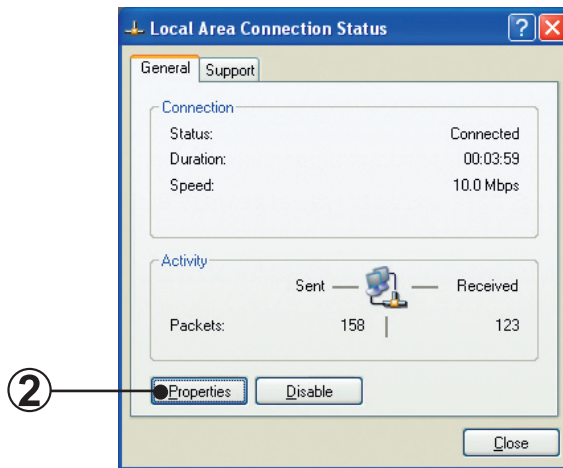
Note



- When the control panel display is Classic View, select the menus in the following order:

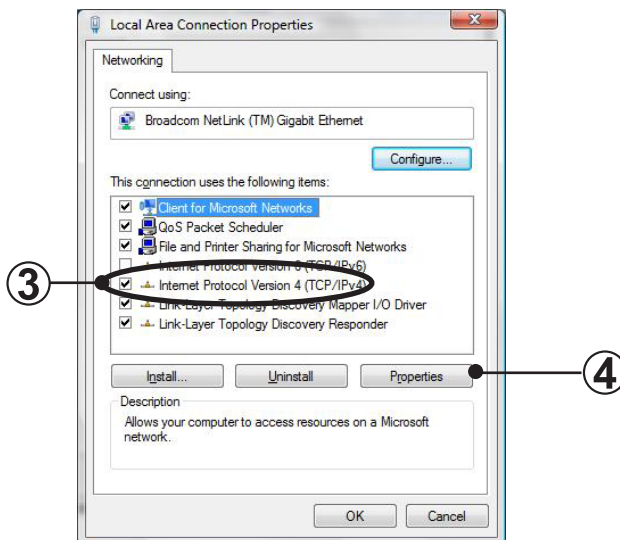


- ② The screen shown below is displayed.
Click **Properties**.



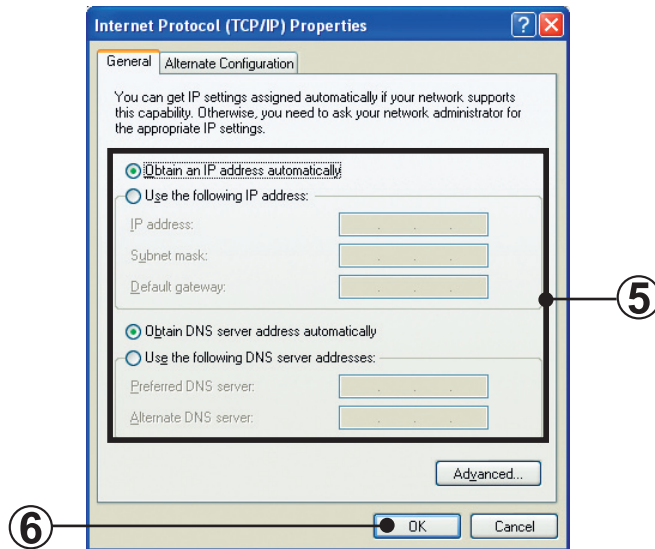
Note • Windows® Vista may have a slightly different view, but the above operation is the same.

- ③ The screen shown below is displayed.
Select by checking “Internet Protocol (TCP/IP)”.



- ④ Click **Properties**.

- ⑤ The screen shown below is displayed.
Select the IP address acquisition/specification method, input IP address to be set, subnet mask, default gateway, and DNS service setting items, which are inputted items of this screen, to match the installation environment in accordance with the network administrator's instructions.



- ⑥ Exit setting by clicking .

6-3-3 Internet connection

Perform connection setting based on the instructions from the Internet Service Provider that you have subscribed to.

6-3-4 Incoming connection

Perform this setting for dial-up connection from the client.


■ Modem setting

Perform connection setting based on the connection procedure of the modem to be used.

■ Remote connection setting

- Windows 2000 & XP


- ① Display the network setting screen by sequentially selecting the menus as follows:

 → [Control Panel] → [Network and Internet Connections] → [Network Connections] → [Create a New connection]

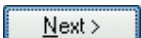
Note



- When the control panel display format is Classic View, select the menus in the following order:

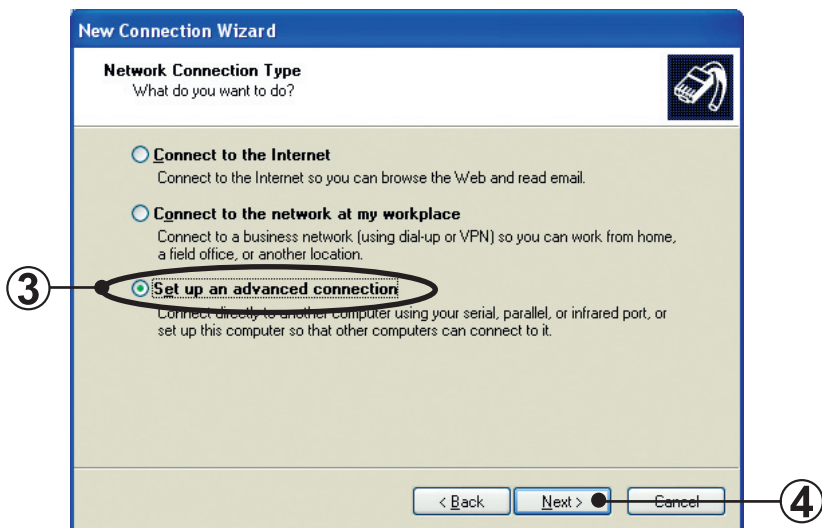
 → [Control Panel] → [Network Connections] → [Create a New connection]

- ② The screen shown below is displayed.

Click .

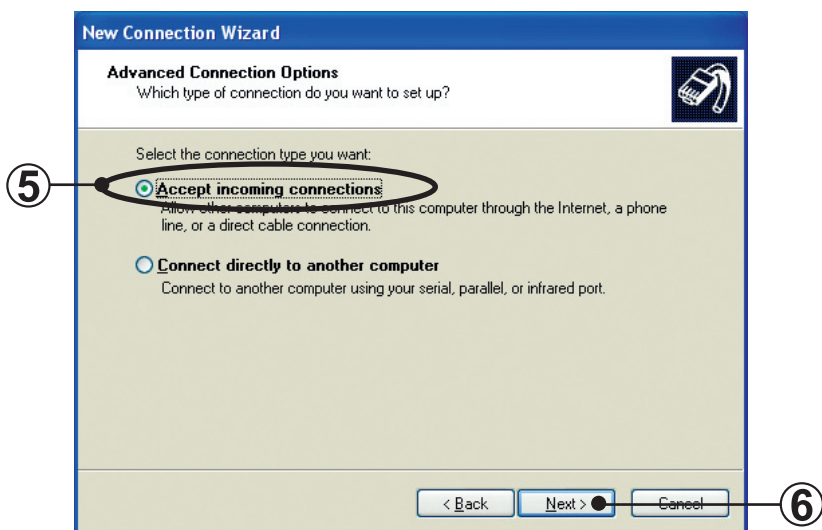


- ③ The screen shown below is displayed.
Select “Set up an advanced connection”.



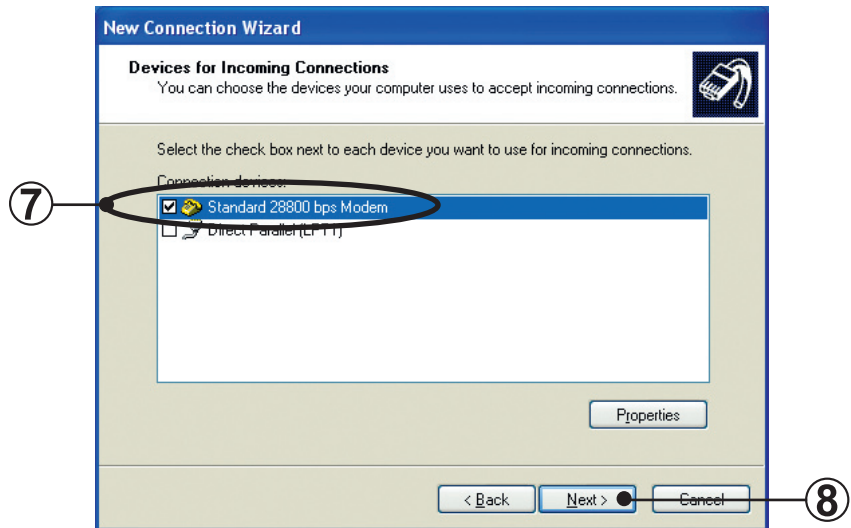
- ④ Click .

- ⑤ The screen shown below is displayed.
Select “Accept incoming connections”.



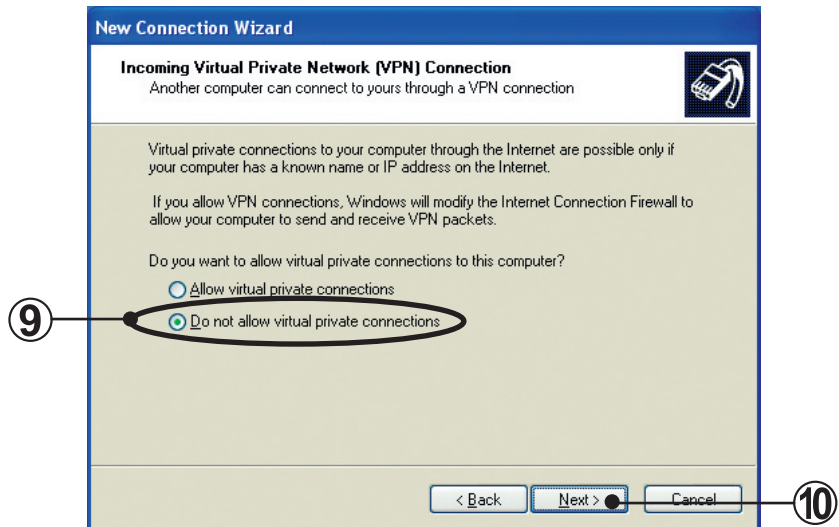
- ⑥ Click .

- ⑦ The screen shown below is displayed.
Select the modem to be used.



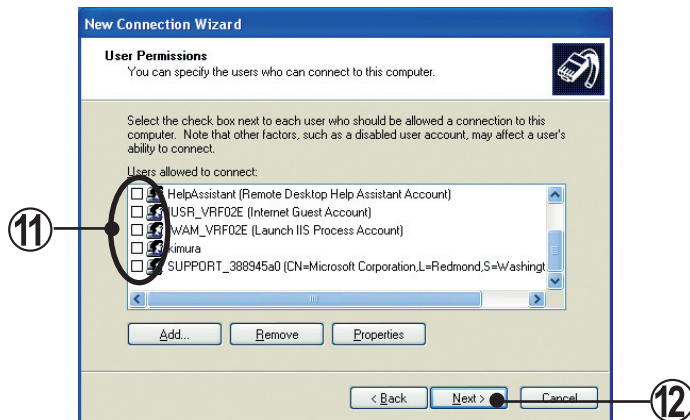
- ⑧ Click **Next >**.

- ⑨ The screen shown below is displayed.
Select "Do not allow virtual private connections".



- ⑩ Click **Next >**.

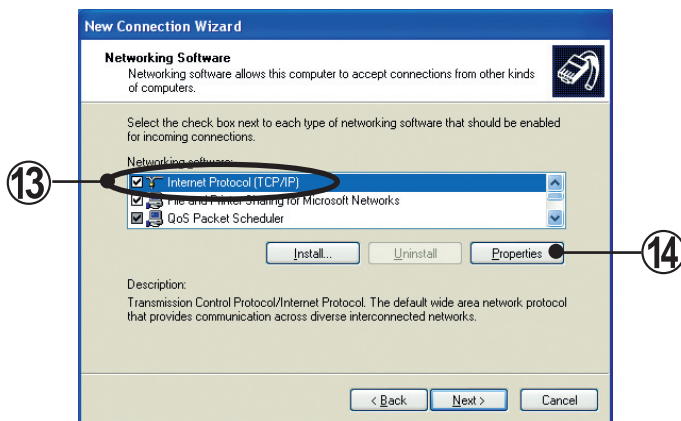
- ⑪ The screen shown below is displayed.
This screen sets the users who can connect to the computer. The users of the Operating System of the machines set at “Users allowed to connect” are displayed. Check the users allowed to connect from the displayed list. (*1) Verification is performed by the Operating System at incoming. For connection from the client, the user set here and the password of that user must be inputted. (*2)



Note *1 When creating a new user, click **Add...** and create the user from the displayed screen.
*2 Perform connection from the client from the screen at step ⑭ of par. 6-3-5 Dial-up setting.

- ⑫ Click **Next >**.

- ⑬ The screen shown below is displayed.
Confirm that “Internet Protocol (TCP/IP)” is checked.
If “Internet Protocol (TCP/IP)” is not checked, check it.



①④ In the Internet Protocol (TCP/IP) selected state, click .

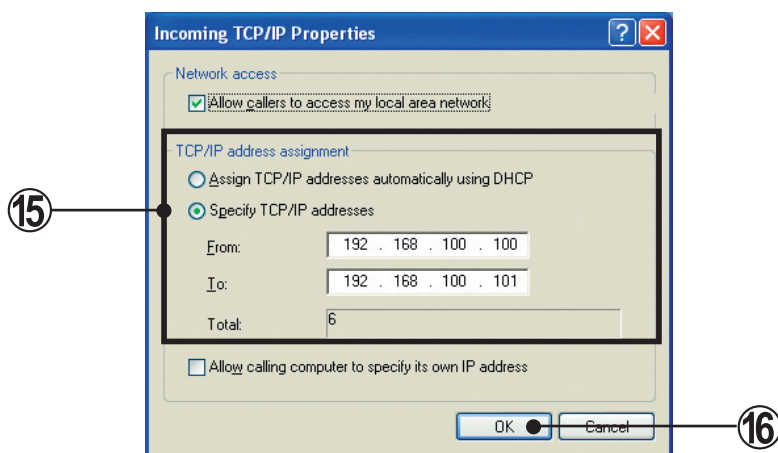
①⑤ The screen shown below is displayed.

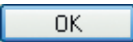
This screen sets the IP address allocated at incoming connection.

Select “Specify TCP/IP address” and sets the “From” and “To” IP addresses serially to match the installation environment in accordance with the network administrator’s instructions. Normally, IP addresses are specified serially, beginning from 192.168. . . , but when connecting the personal computer which performs the setting to another network (for instance, LAN), be sure that the set IP addresses do not duplicate those of a personal computer on the other network.

For incoming connection, the IP address specified by “From” becomes the IP address of this machine and the IP address specified by “To” is set at the client IP address.


The example below shows setting when the local personal computer is made 192.168.100.100 and the client IP address is set to 192.168.100.101.



①⑥ Close the screen by clicking .

①⑦ Click  at the screen at step.

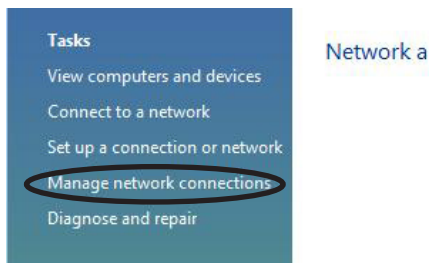
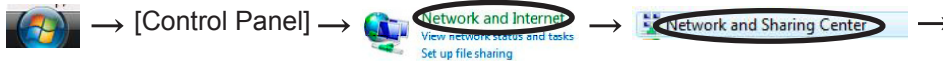
18 The screen shown below is displayed.

Click .

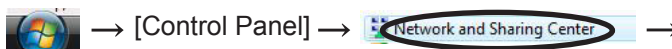


- Windows® Vista

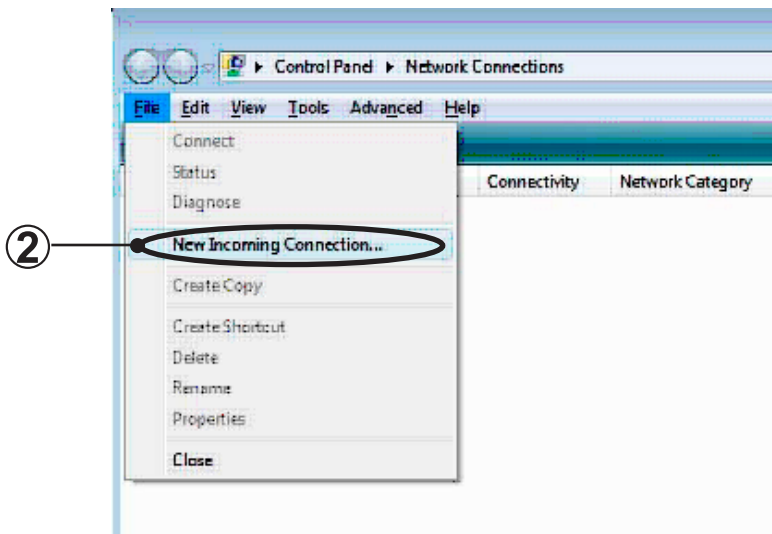
1 Display the network setting screen by sequentially selecting the menus as follows:



Note • When the control panel display is Classic View, select the menus in the following order:

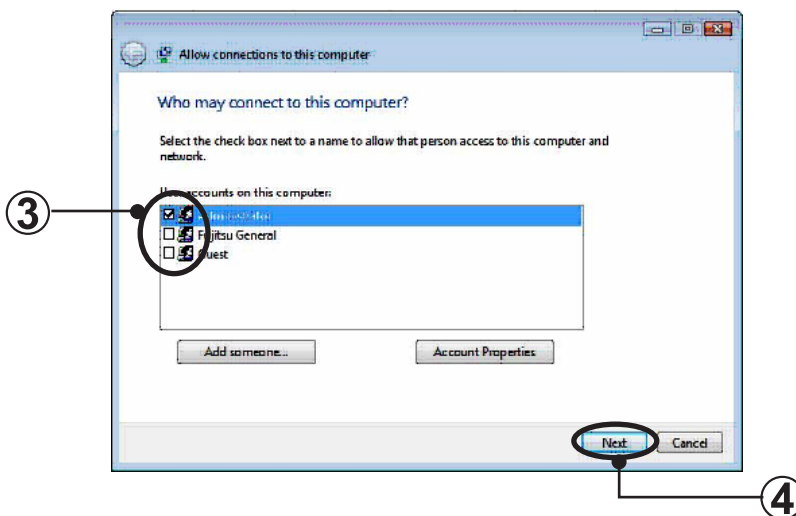


- ② In the Network Connections screen, press “Alt” key. When the menu bar appear on the top, click “File”, then “New Incoming Connection...”



- ③ The screen shown below is displayed.
This screen sets the users who can connect to the computer. The users of the Operating System of the machines are displayed. Check the users allowed to connect from the displayed list. (*1)

Verification is performed by the Operating System at incoming. For connection from the client, the user set here and the password of that user must be input. (*2)

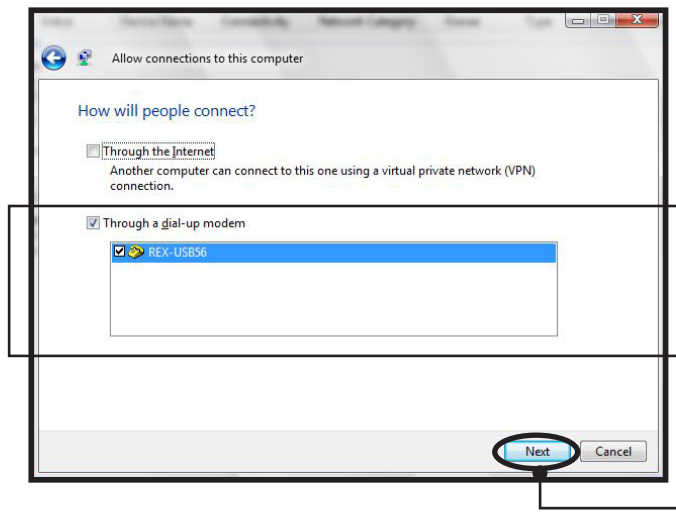


Note *1 When creating a new user, click “Add someone...” and create the user from the displayed screen.

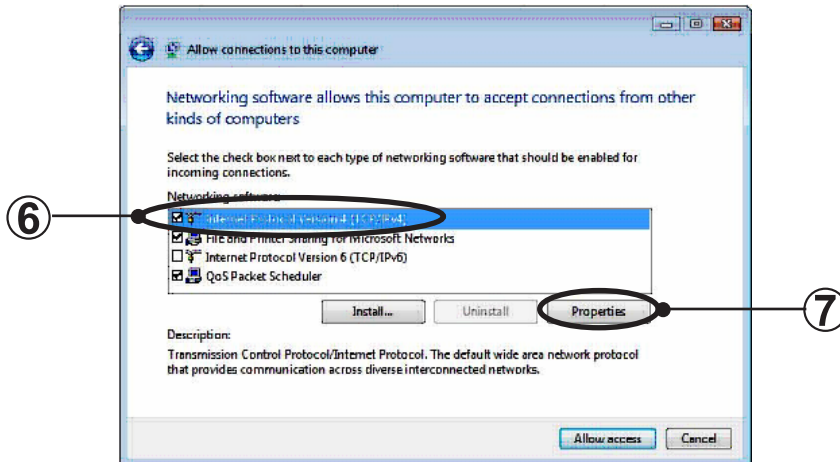
*2 Perform connection from the client from the screen at step ⑭ of par. 6-3-5 Dial-up setting.

④ Click **Next >**.

⑤ The screen shown below is displayed.
Select the modem to be used and click **Next >**.



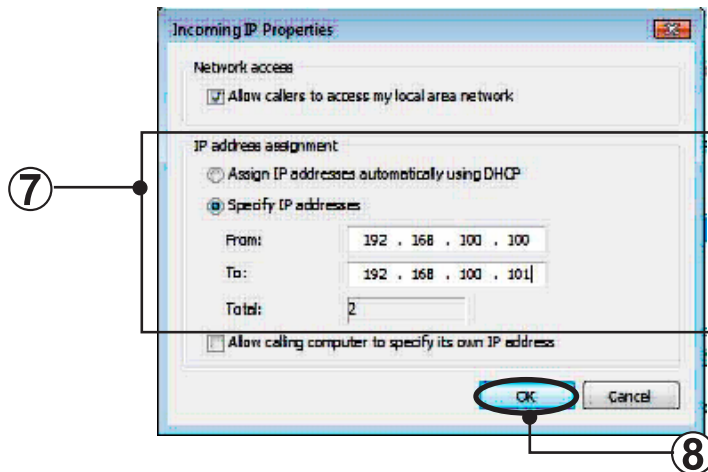
⑥ The screen shown below is displayed.
Confirm that “Internet Protocol Version 4 (TCP/IPv4)” is checked.
If “Internet Protocol Version 4 (TCP/IPv4)” is not checked, check it.



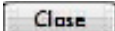
⑦ In the Internet Protocol (TCP/IP) selected state, click “Properties”.
The screen shown below is displayed.

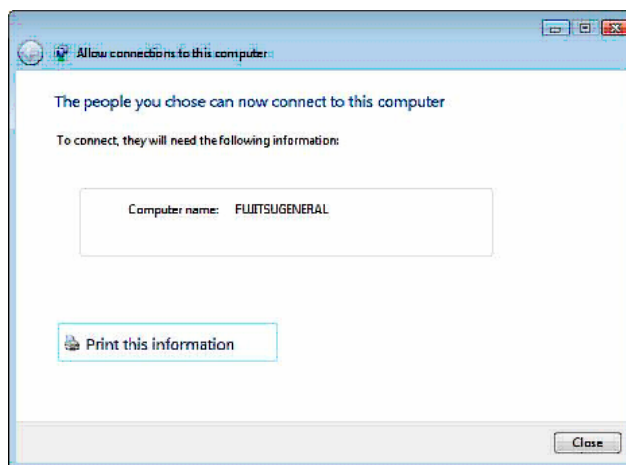
This screen sets the IP address allocated at incoming connection.
Select “Specify TCP/IP address” and sets the “From” and “To” IP addresses serially to match the installation environment in accordance with the network administrator’s instructions. Normally IP addresses are specified serially, beginning from 192.168. . , but when connecting the personal computer which performs the setting to another network (for instance, LAN), be sure that the set IP addresses do not duplicate those of a personal computer on the other network.

For incoming connection, the IP address specified by “From” becomes the IP address of this machine and the IP address specified by “To” is set at the client IP address. The example below shows setting when the local personal computer is made 192.168.100.100 and the client IP address is set to 192.168.100.101.



- ⑧ Close the screen by clicking “OK”.
Then click “Allow access” in the next screen.

- ⑨ The screen shown below is displayed.
Press  .




- ⑩ Close the “Network Connections” screen.
- ⑪ Close the “Network and Sharing center”.

6-3-5 Dial-up setting

- Windows® 2000 & XP


① Display the LAN setting screen by sequentially selecting the menus as follows:

 → [Control Panel] → [Network and Internet Connections] → [Network Connections] → [Create a New connection]

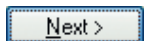
Note

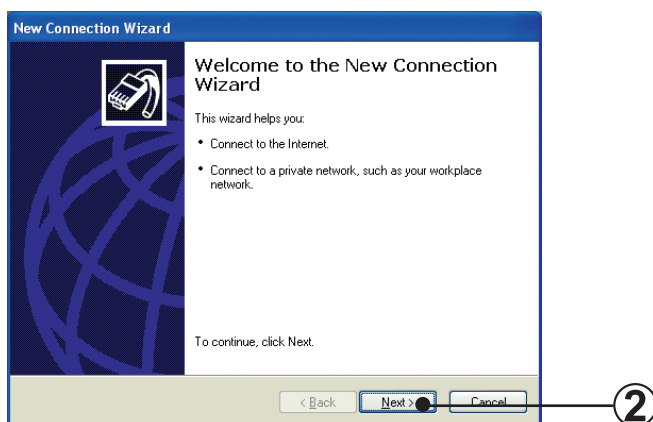


- When the control panel display format is Classic View, select the menus in the following order:

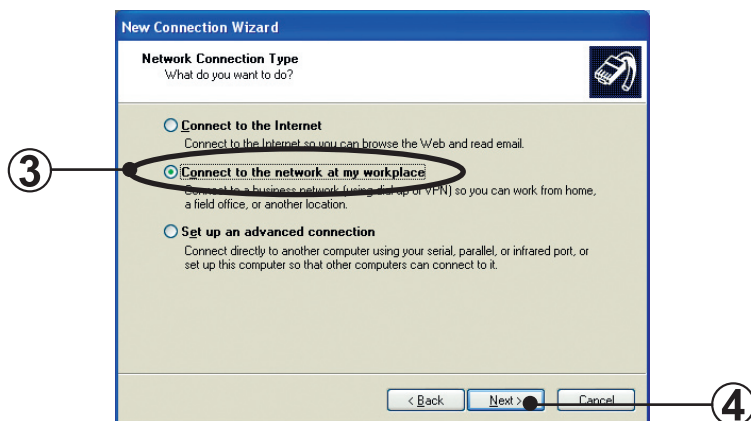
 → [Control Panel] → [Network Connections] → [Create a New connection]

② The screen shown below is displayed.

Click .

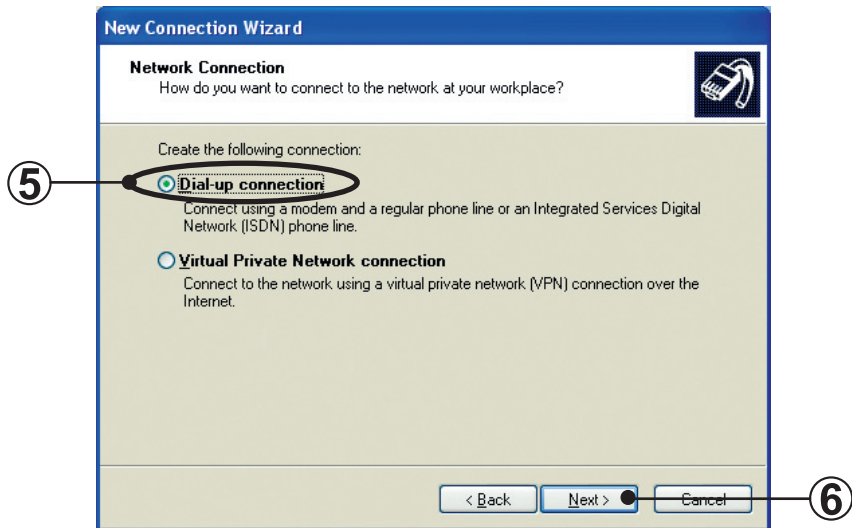


③ The screen shown below is displayed.
Select "Connect to network at my workplace".



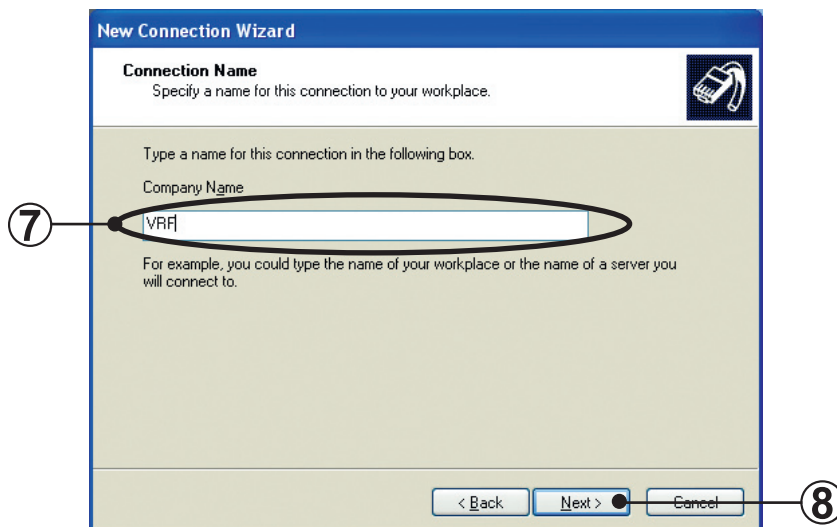
④ Click **Next >**.

⑤ The screen shown below is displayed.
Select "Dial-up connection".



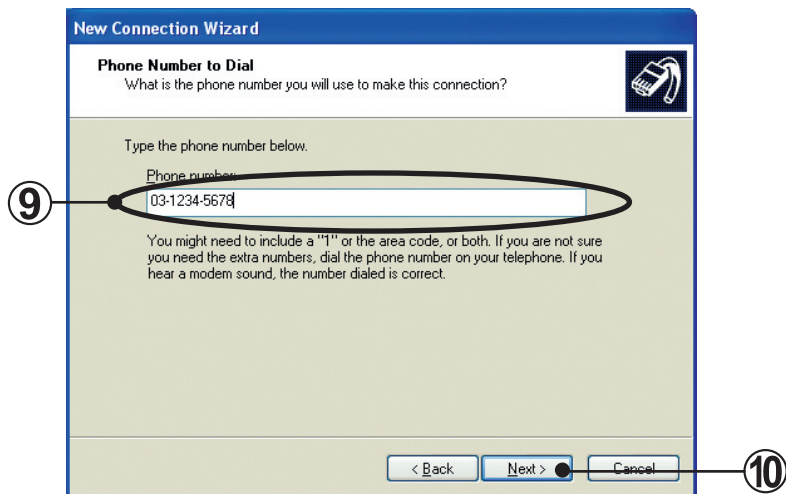
⑥ Click **Next >**.

⑦ The screen shown below is displayed.
Input Company Name. Since this becomes the connection setting name, input a name that is easy to understand. In this example, "VRF" is inputted.



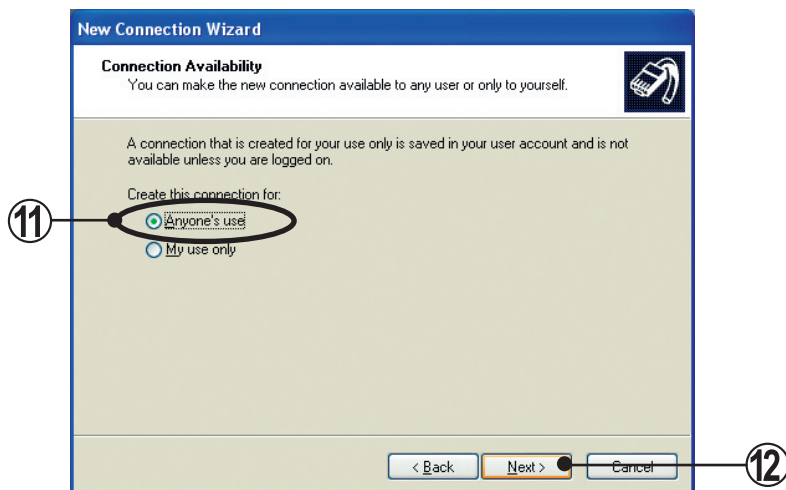
⑧ Click **Next >**.

⑨ The screen shown below is displayed.
Type the phone number to be connected.



⑩ Click **Next >**.

⑪ The screen shown below is displayed.
If there are no special problems, select "Anyone's use".
This connection setting can be used by all users of the computer used.



Note If this screen is not displayed, proceed to step ⑫



⑫ Click **Next >**.

13 The screen shown below is displayed.

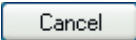
Finish setting by clicking .

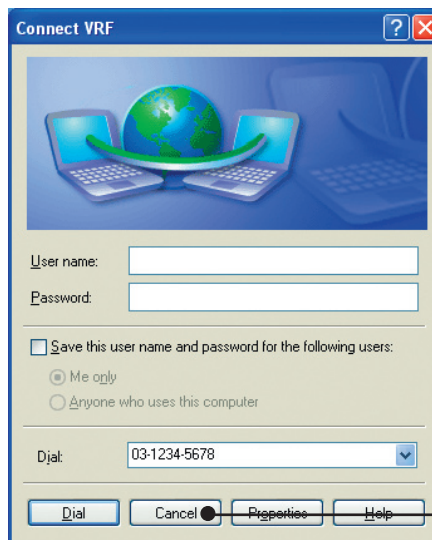
When setting ends, the dial-up screen is displayed.



14 The screen shown below is displayed.

When performing connection, do it from this screen.

Here, close the screen by clicking .

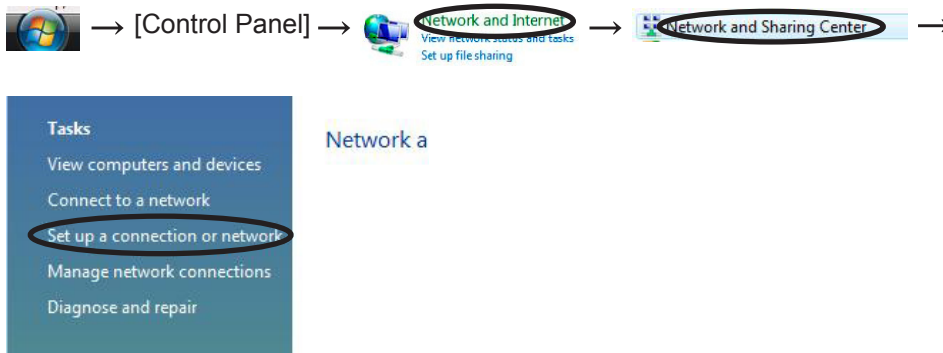


Note *1 When performing connection, input the user name/password specified at step 11 of 6-3-4 Remote connection setting.

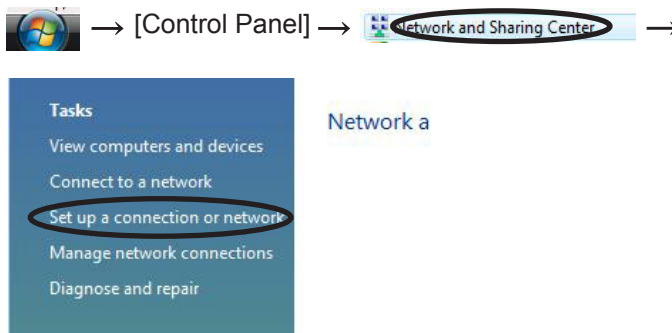


- Windows® Vista

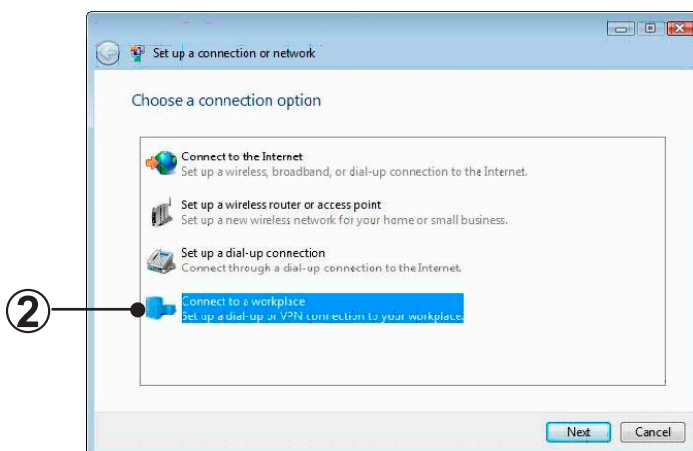
- 1 Display the network setting screen by sequentially selecting the menus as follows:



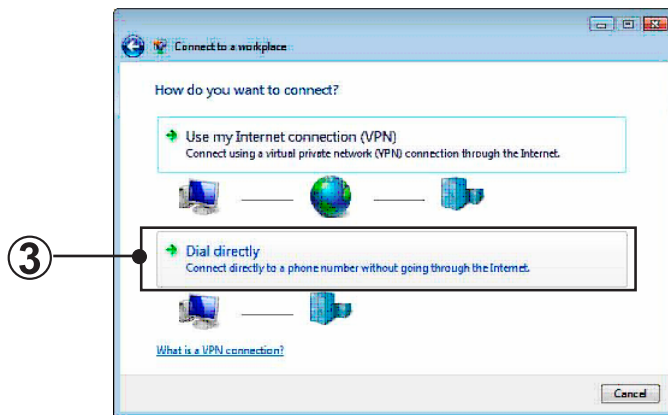
Note • When the control panel display is Classic View, select the menus in the following order:



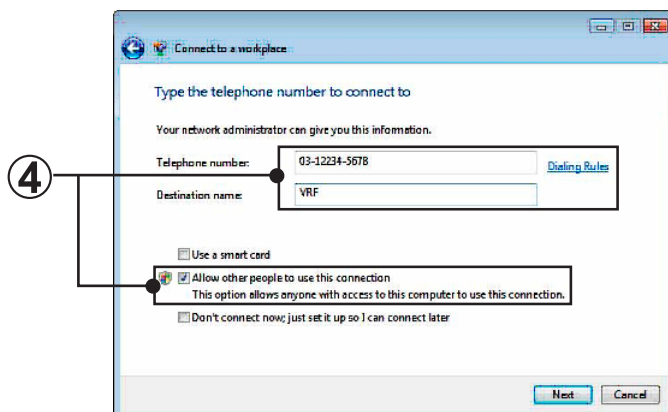
- 2 The screen shown below is displayed. Select "Connect to a workplace".



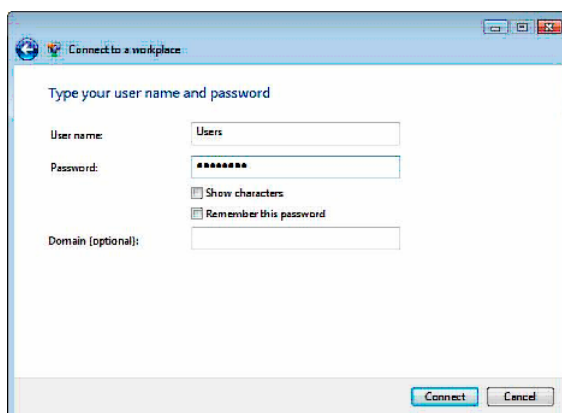
- ③ The screen shown below is displayed.
Select “Dial directly”.



- ④ The screen shown below is displayed.
Type the Telephone number, Destination name and check on the “Allow other people to use this connection” if there are no special problems.
This connection setting can be used by all users of the computer used.



- ⑤ The screen shown below is displayed.
When performing connection, do it from this screen.
Here close the screen by clicking “Cancel”



- When performing connection, input the user name/password specified at step ⑪ of 6-3-4 Remote connection setting.

6-4 Automatic starting

Setting to automatically log in to the Operating System is performed. By performing this setting, the Web Monitoring Tool can be automatically started by only turning on the personal computer power. When you want to start Web Monitoring Tool automatically, when the PC recovers from power failure, perform the following setting:

① Open the setting screen.

The setting screen opening method depends on the Operating System.

- Windows® XP

Sequentially select the menus as shown below and display the Run screen.



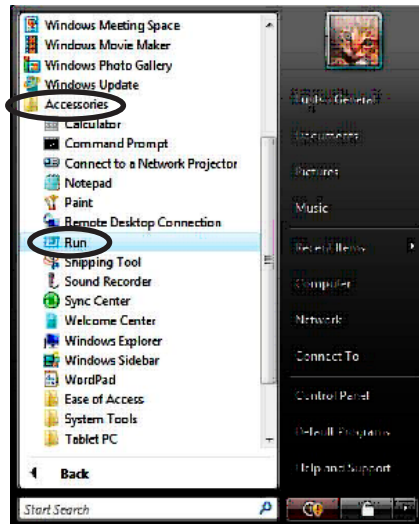
- Windows® 2000

Sequentially select the menus as shown below and display the setting screen.



- Windows® Vista

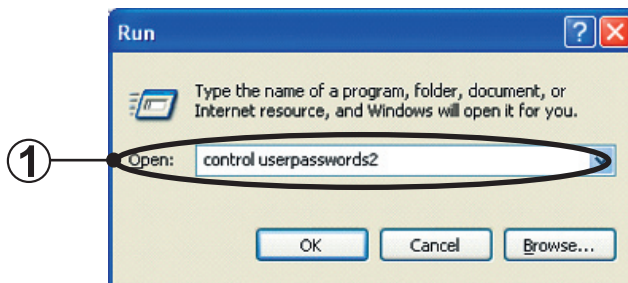
Sequentially select the meus as shown below and display the setting screen.



The screen shown below is displayed.

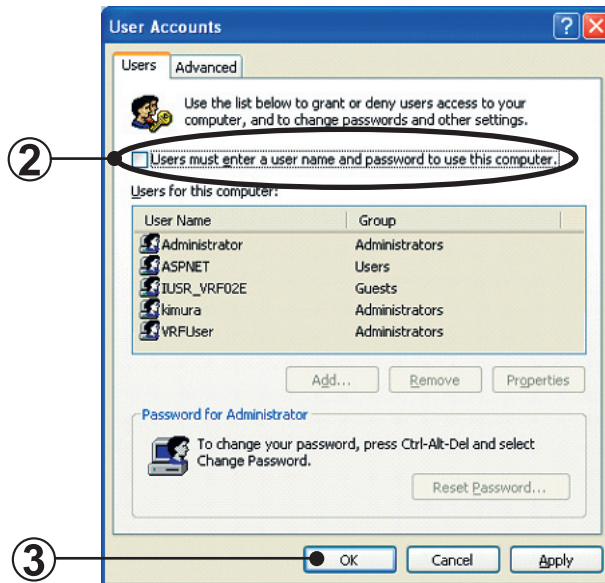
Input the following at the Open field.

control userpasswords2



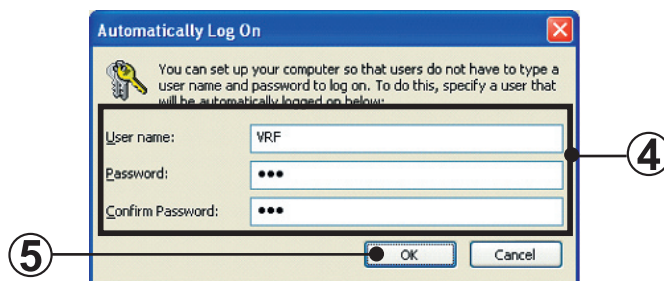
- ② The screen shown below is displayed.
Remove the check mark at “Users must enter a user name and password to use this computer”.

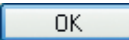
When there is no “Users must enter a user name and password to use this computer” display, refer to Troubleshooting T-1.



- ③ Click .

- ④ The screen shown below is displayed.
Input the user name and password. The user is automatically logged in by the user name/password specified here. When “Only for me” was selected at “Install this application for:” of software installation (5-2), input the user used for installation.



- ⑤ Finish setting by clicking .
- At the next starting, the system is started by the user set here.

Contents

| | |
|---------------------------------|-----------|
| 7. Troubleshooting | 62 |
|---------------------------------|-----------|

7. Troubleshooting


When trouble occurred during installation work, refer to this section. This section describes assumed problems and how to solve them.

- T-1 “Users must enter a user name and password to use this computer.” Check mark is not displayed at par. 6-4 Automatic starting setup.

Cause :

Check mark is not displayed when participating at domain by network setting.

Countermeasure :

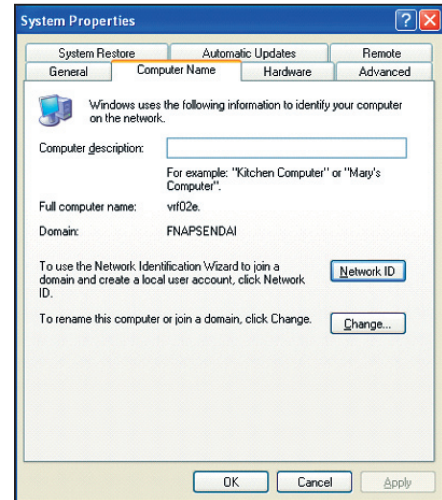
Change the “Member of” setting item from “Domain” to “Workgroup” at the setting screen which is displayed by pressing  of the screen shown at the right.

*Screen display method



→ [Control Panel] → [System]

Click the Computer Name tab of the System Properties screen.



Trademarks

- Echelon[®], LON[®], LONWORKS[®], LONMARK[®], LonBuilder[®], NodeBuilder[®], LonManager[®], LonTalk[®], LonUsers[®], LonPoint[®], Digital Home[®], Neuron[®], 3120[®], 3150[®], LNS[®], i.LON[®], LONWORLD[®], ShortStack[®], Panoramix[®], LonMaker[®], the Echelon logo, and the LonUsers logo are trademarks of Echelon Corporation registered in the United States and other countries.
- Microsoft[®], Windows[®] are a registered trademark of Microsoft[®] Corporation in the United States and other countries.
- Intel[®], Celeron[®] and Pentium[®] are trademarks or registered trademarks of Intel Corporation or its subsidiaries in the United States and other countries.
- AMD Athlon[™], AMD Duron[™] are trademarks of Advanced Micro Devices, Inc.
- Adobe[®], Acrobat Reader[®] are either registered trademarks or trademarks of Adobe Systems Incorporated in the United States and/or other countries.
- WIBU is a registered trademark of WIBU-SYSTEMS AG.

